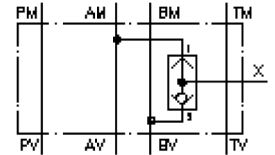


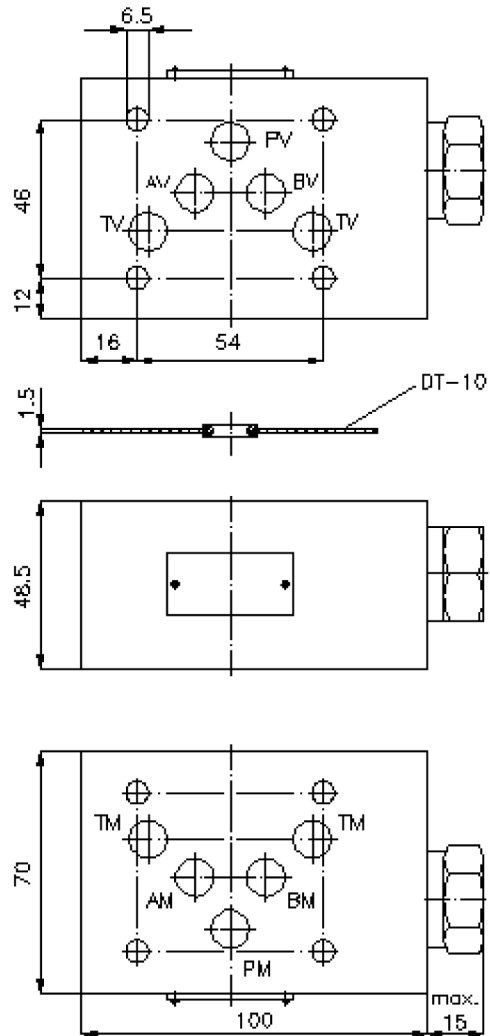
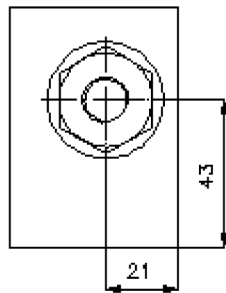
shuttle valve CETOP 5 ((sandwich plate) external port X) WRVZ-10.-CC

IZ-160-450-00

(subject to change)



port
"X"
BSPP 1/4"



shuttle valve CETOP 5 ((sandwich plate) external port X) WRVZ-10.-CC



Motrac Hydraulik GmbH
Siemensring 87 - D-47877 Willich
fon +49-(0)2154-8162.0 - fax +49-(0)2154-8162.499
e-mail info.miw@motracindustries.com
internet www.motracindustries.com

IZ-160-450-00

(subject to change)

Ordering example:

WRVZ - 10A - CC
| | |
A **B** **C**

Model code:

- | | | |
|---|--|---|
| <p>A design
shuttle valve
with mounting interface DIN 24340 form A
sandwichplate design</p> | <p>B size and material
10A = aluminum (F37)
10S = steel (9SMnPb28K resp. GGG-40)</p> | <p>C function mode
CC = shuttle-valve BDSV-10.-2-..</p> |
|---|--|---|

Technical Data:

- | | |
|--------------------------|--|
| note: | Rotating the shuttle valve plate around the lateral axis (P), port X is optional on the a or B side. |
| nominal pressure: | 250 bar (A)
350 bar (S) |
| weight: | 1.1 / 2.8 kg (A/S) |
| shuttle valve: | BDSV-10.-2-.. see datasheet no. CC-310-101-00 |
| included: | DT-10 = sealing plate with vulcanized O-ring (Viton FPM) |