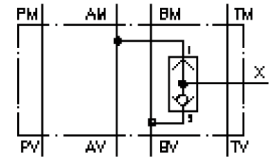


shuttle valve CETOP 3 ((sandwich plate) external port X)

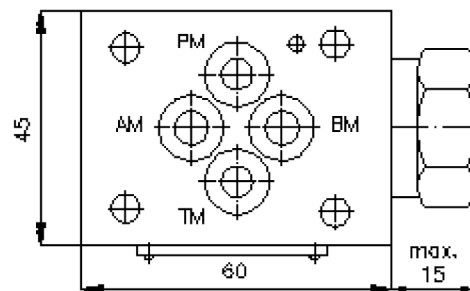
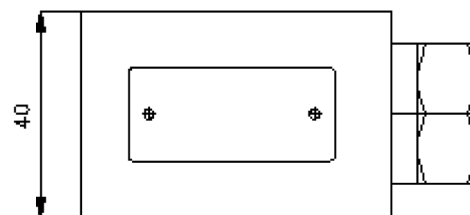
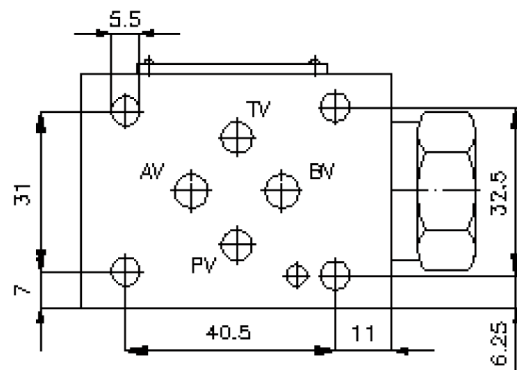
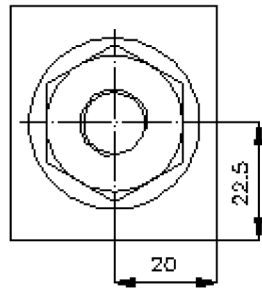
WRVZ-06.-CCB

IZ-160-250-00

(subject to change)



port
"X"
BSPP 1/4"



shuttle valve CETOP 3 ((sandwich plate) external port X)

WRVZ-06.-CCB



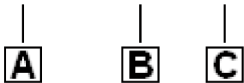
Motrac Hydraulik GmbH
Siemensring 87 - D-47877 Willich
fon +49-(0)2154-8162.0 - fax +49-(0)2154-8162.499
e-mail info.miw@motracindustries.com
internet www.motracindustries.com

IZ-160-250-00

(subject to change)

Ordering example:

WRVZ - 06S - CCB



Model code:

A **design**
shuttle valve plate
with mounting interface DIN 24340 form A
sandwichplate design

B **size and material**
06A = aluminum (F37)
06S = steel (9SMnPb28K resp. GGG-40)

C **function mode**
CCB = shuttle-valve BDSV-10.-2-..

Technical Data:

nominal pressure: 250 bar (A)
350 bar (S)

weight: 0.5 / 1.1 kg (A/S)

shuttle valve: BDSV-10.-2-.. see datasheet no. [CC-310-101-00](#)

seals: included:
4 pcs. O-ring 9.25 x 1.78