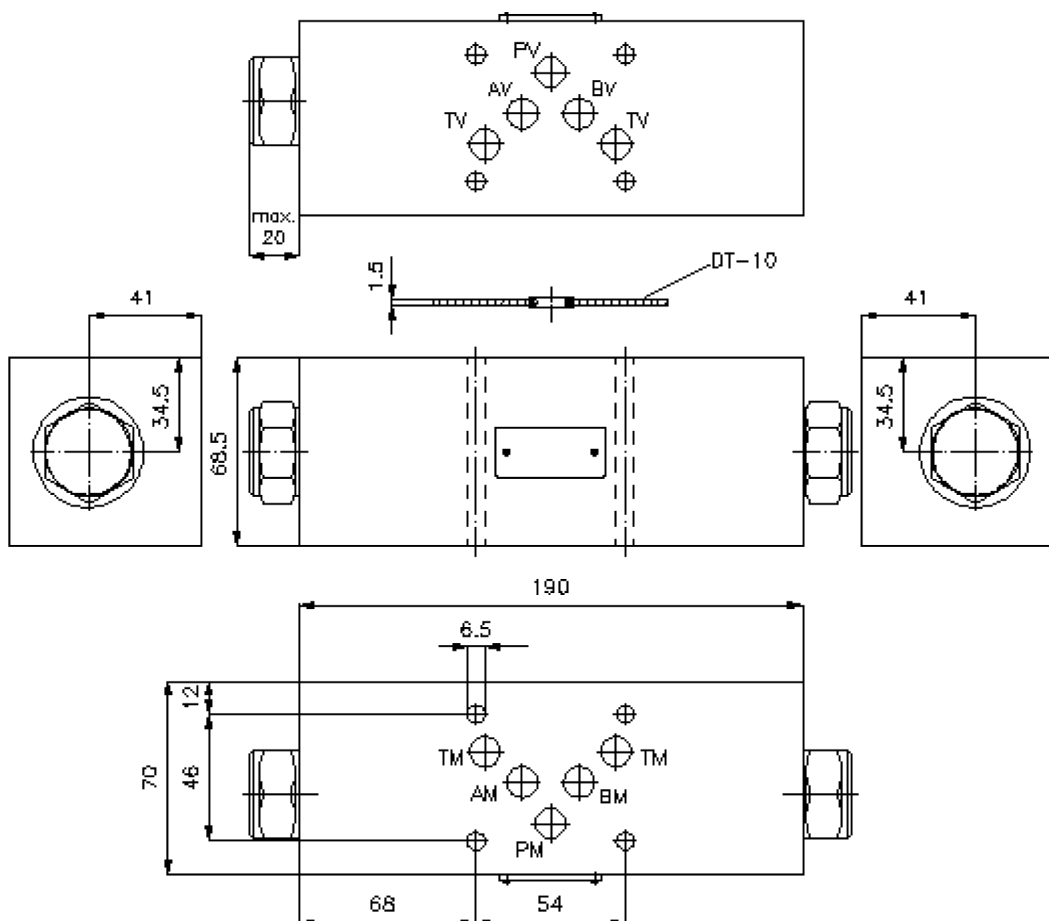
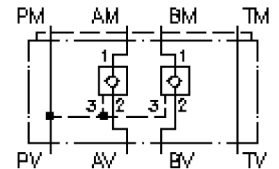


pilot op. check valve from P CETOP 5 ((sandwich plate) in A+B)

REMZ-10A-A+B/...

IZ-140-402-00

(subject to change)



pilot op. check valve from P CETOP 5 ((sandwich plate) in A+B)

REMZ-10A-A+B/...



Motrac Hydraulik GmbH
Siemensring 87 - D-47877 Willich
fon +49-(0)2154-8162.0 - fax +49-(0)2154-8162.499
e-mail info.miw@motracindustries.com
internet www.motracindustries.com

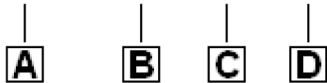
IZ-140-402-00

(subject to change)



Ordering example:

REMZ - 10A - A+B / 030



Model code:

- | | |
|--|---|
| <p>A design
pilot operated check valve
pilot operated from P
with mounting interface DIN 24340 form A
sandwichplate design</p> <p>B size and material
10A = aluminum (F37)</p> | <p>C function mode
A+B = in A and B acting</p> <p>D pilot operated check valve free flow crack pressure POC1-12.-..
005 = 0.3 bar
030 = 2.0 bar
075 = 5.1 bar
100 = 6.9 bar</p> |
|--|---|

Technical Data:

- | | |
|-----------------------------|--|
| nominal pressure: | 250 bar |
| nominal flow: | 114 l/min |
| weight: | 2.4 kg |
| check valve: | POC1-12.- see datasheet no.: MC-210-121-00 |
| free flow direction: | see symbol |
| included: | DT-10 = sealing plate with vulcanized O-ring (Viton FPM) |