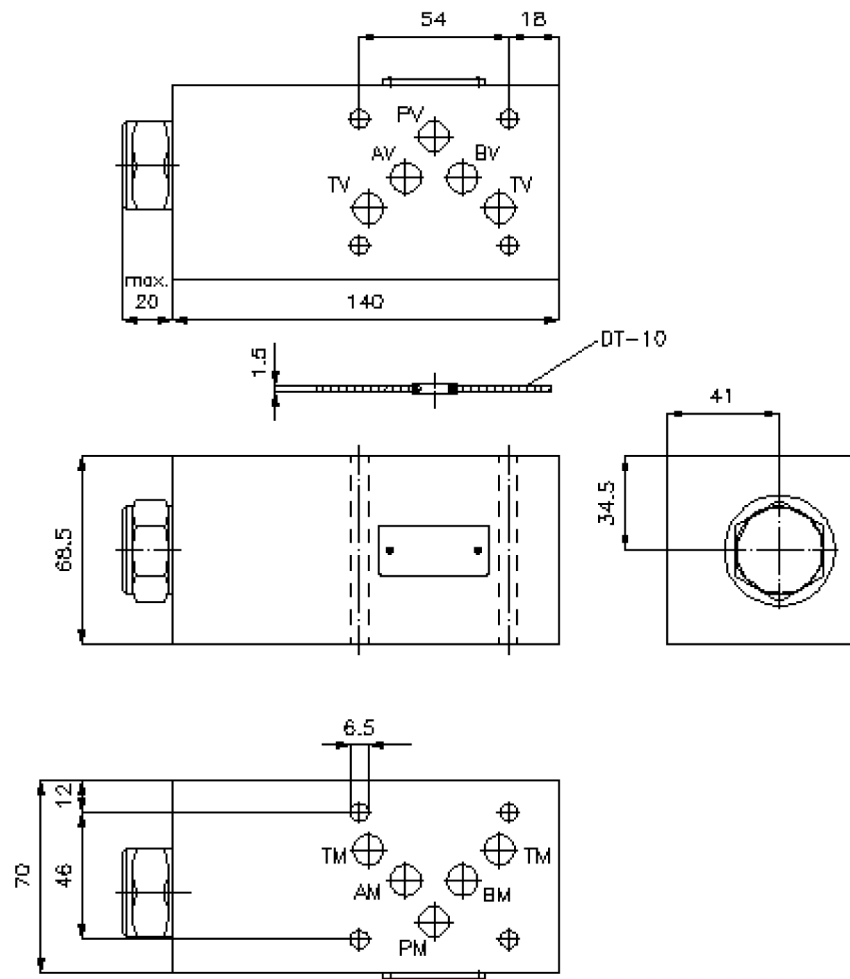
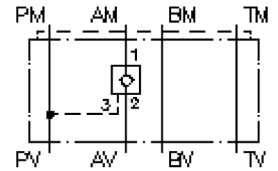


# pilot op. check valve from P CETOP 5 ((sandwich plate) in A)

REMZ-10A-A/...

**IZ-140-400-00**

(subject to change)



# pilot op. check valve from P CETOP 5 ((sandwich plate) in A)

REMZ-10A-A/...



Motrac Hydraulik GmbH  
Siemensring 87 - D-47877 Willich  
fon +49-(0)2154-8162.0 - fax +49-(0)2154-8162.499  
e-mail info.miw@motracindustries.com  
internet www.motracindustries.com

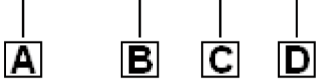
IZ-140-400-00

(subject to change)



## Ordering example:

REMZ - 10A - A / 030



## Model code:

- |  |  |
|--|--|
| <p><b>A</b> <b>design</b><br/>pilot operated check valve<br/>pilot operated from P<br/>with mounting interface DIN 24340 form A<br/>sandwichplate design</p> <p><b>B</b> <b>size and material</b><br/>10A = aluminum (F37)</p> | <p><b>C</b> <b>function mode</b><br/>A = in A acting</p> <p><b>D</b> <b>pilot operated check valve free flow<br/>crack pressure POC1-12.-...</b><br/>005 = 0.3 bar<br/>030 = 2.0 bar<br/>075 = 5.1 bar<br/>100 = 6.9 bar</p> |
|--|--|

## Technical Data:

- |                             |  |
|-----------------------------|--|
| <b>nominal pressure:</b>    | 250 bar  |
| <b>nominal flow:</b>        | 114 l/min  |
| <b>weight:</b>              | 1.9 kg   |
| <b>check valve:</b>         | POC1-12.- see datasheet no.: <a href="#">MC-210-121-00</a> |
| <b>free flow direction:</b> | see symbol   |
| <b>included:</b>            | DT-10 = sealing plate with vulcanized O-ring (Viton FPM)   |