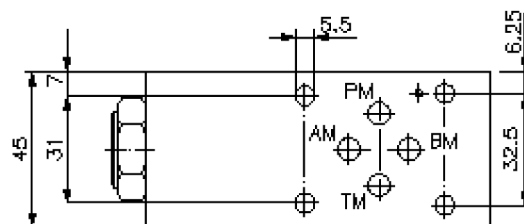
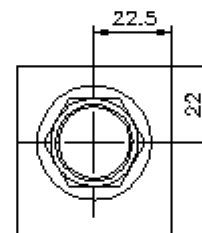
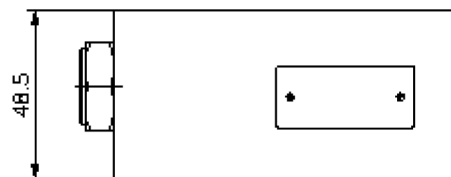
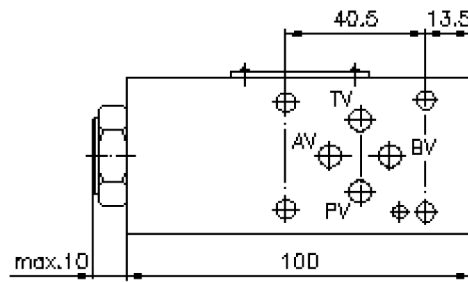
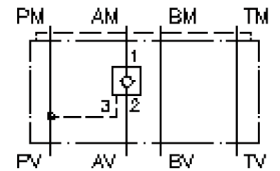


pilot op. check valve from P CETOP 3 ((sandwich plate) in A)

REMZ-06A-A/...

IZ-140-200-00

(subject to change)



pilot op. check valve from P CETOP 3 ((sandwich plate) in A)

REMZ-06A-A/...



Motrac Hydraulik GmbH
Siemensring 87 - D-47877 Willich
fon +49-(0)2154-8162.0 - fax +49-(0)2154-8162.499
e-mail info.miw@motracindustries.com
internet www.motracindustries.com

IZ-140-200-00

(subject to change)



Ordering example:

REMZ - 06A - A / 030



Model code:

- | | |
|---|---|
| <p>A design
pilot operated check valve
with mounting interface DIN 24340 form A
sandwichplate design</p> <p>B size and material
06A = aluminum (F37)</p> <p>C function mode
A = in A acting</p> | <p>D pilot operated check valve free flow
crack pressure POC1-10.-...
005 = 0.3 bar
030 = 2.0 bar
075 = 5.1 bar
100 = 6.9 bar</p> |
|---|---|

Technical Data:

nominal pressure:	250 bar
nominal flow:	57 l/min
weight:	0.6 kg
check valve:	POC1-10.- see datasheet no.: MC-210-101-00
free flow direction:	see symbol
included:	DT-06 = sealing plate with vulcanized O-ring (Viton FPM)