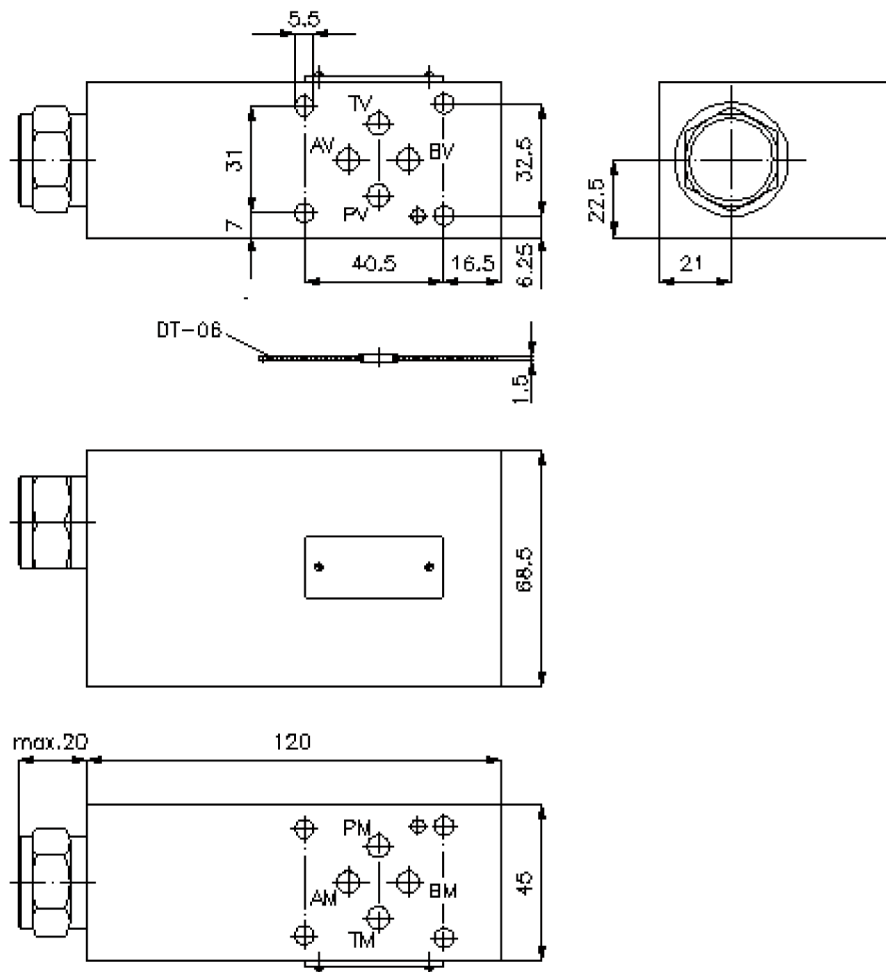
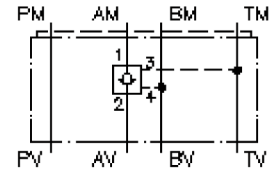


pilot operated check valve CETOP 3 ((sandwich plate) in A (vented to T))

RHEVZ-06S-A/..



pilot operated check valve CETOP 3 ((sandwich plate) in A (vented to T))

RHEVZ-06S-A/..



Motrac Hydraulik GmbH
Siemensring 87 - D-47877 Willich
fon +49-(0)2154-8162.0 - fax +49-(0)2154-8162.499
e-mail info.miw@motracindustries.com
internet www.motracindustries.com

IZ-135-250-00

(subject to change)



Ordering example:

RHEVZ - 06S - A / 30



Model code:

- | | |
|--|--|
| <p>A design
pilot operated check valve
with mounting interface DIN 24340 form A
sandwichplate design
vented spring</p> <p>B size and material
06S = steel (9SMnPb28K resp. GGG-40)</p> | <p>C function mode
A = in A acting</p> <p>D pilot operated check valve free flow crack pressure POCV-10.-..
10 = 0.7 bar
30 = 2.1 bar
60 = 4.1 bar</p> |
|--|--|

Technical Data:

- | | |
|-----------------------------|--|
| nominal pressure: | 350 bar |
| nominal flow: | 60 l/min |
| weight: | 2.9 kg |
| check valve: | POCV-10.- see datasheet no.: CC-220-101-00 |
| free flow direction: | see symbol |
| included: | DT-06 = sealing plate with vulcanized O-ring (Viton FPM) |