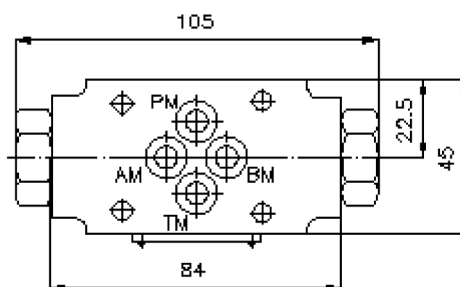
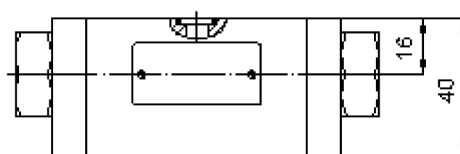
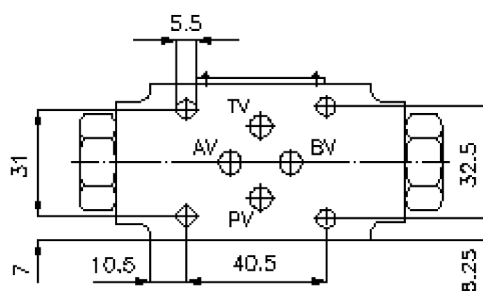
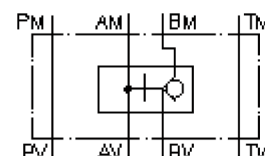


pilot operated check valve CETOP 3 ((sandwich plate) in B)

RHEZ-06S-B

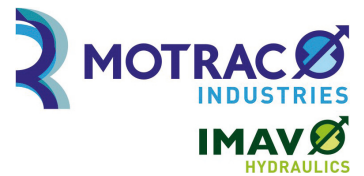
IZ-130-201-00

(subject to change)



pilot operated check valve CETOP 3 ((sandwich plate) in B)

RHEZ-06S-B



Motrac Hydraulik GmbH
Siemensring 87 - D-47877 Willich
fon +49-(0)2154-8162.0 - fax +49-(0)2154-8162.499
e-mail info.miw@motracindustries.com
internet www.motracindustries.com

IZ-130-201-00

(subject to change)



Ordering example:

RHEZ - 06S - B
| | |
A **B** **C**

Model code:

- | | |
|--|---|
| <p>A design
pilot operated check valve
with mounting interface DIN 24340 form A
sandwichplate design</p> | <p>B size and material
06S = steel (9SMnPb28K resp. GGG-40)</p> <p>C function mode
B = check valve in the "B" channel</p> |
|--|---|

Technical Data:

nominal pressure:	320 bar
nominal flow:	60 l/min
weight:	0.8 kg
temperature range:	-20°C till 70°C
fluids:	hydraulic oil as per DIN 51524 T1 (ISO TC 131)
seals:	optional Buna (NBR) or Viton (FPM)
included:	included 3 pcs. O-Ring 9.25 x 1.78
pilot ratio:	3 : 1
crack pressure:	2.5 bar (other crack pressure on request)