

pilot operated check valve CETOP 3 ((sandwich plate) in A)

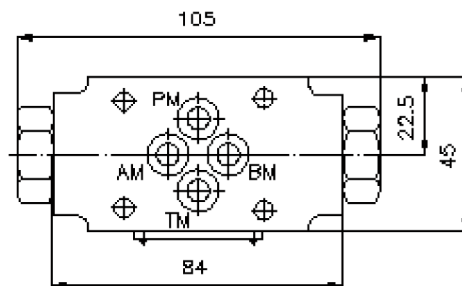
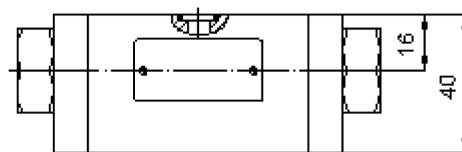
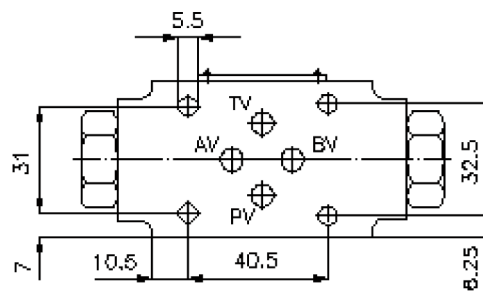
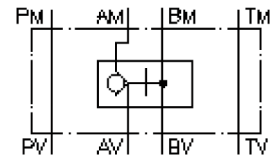
RHEZ-06S-A



Motrac Hydraulik GmbH
Siemensring 87 - D-47877 Willich
fon +49-(0)2154-8162.0 - fax +49-(0)2154-8162.499
e-mail info.miw@motracindustries.com
internet www.motracindustries.com

IZ-130-200-00

(subject to change)



pilot operated check valve CETOP 3 ((sandwich plate) in A)

RHEZ-06S-A



Motrac Hydraulik GmbH
Siemensring 87 - D-47877 Willich
fon +49-(0)2154-8162.0 - fax +49-(0)2154-8162.499
e-mail info.miw@motracindustries.com
internet www.motracindustries.com

IZ-130-200-00

(subject to change)



Ordering example:

RHEZ - 06S - A
| | |
A **B** **C**

Model code:

- | | | | |
|----------|---|----------|--|
| A | design
pilot operated check valve
with mounting interface DIN 24340 form A
sandwichplate design | B | size and material
06S = steel (9SMnPb28K resp. GGG-40) |
| | | C | function mode
A = check valve in the "A" channel |

Technical Data:

nominal pressure:	320 bar
nominal flow:	60 l/min
weight:	0.8 kg
temperature range:	-20°C till 70°C
fluids:	hydraulic oil as per DIN 51524 T1 (ISO TC 131)
seals:	optional Buna (NBR) or Viton (FPM)
included:	included 3 pcs. O-Ring 9.25 x 1.78
pilot ratio:	3 : 1
crack pressure:	2.5 bar (other crack pressure on request)