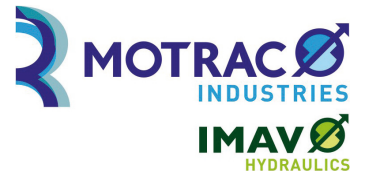


check valve plate CETOP 8 ((sandwich plate) in T)

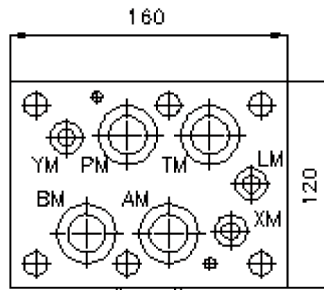
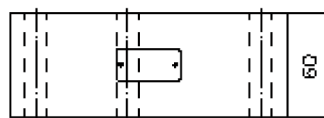
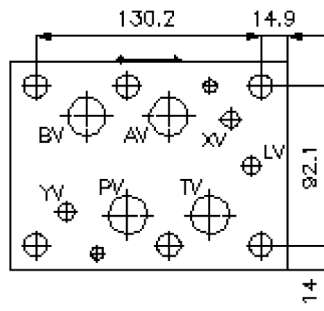
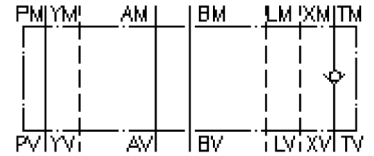
RVZ-25.-T



Motrac Hydraulik GmbH
Siemensring 87 - D-47877 Willich
fon +49-(0)2154-8162.0 - fax +49-(0)2154-8162.499
e-mail info.miw@motracindustries.com
internet www.motracindustries.com

IZ-110-601-00

(subject to change)



check valve plate CETOP 8 ((sandwich plate) in T)

RVZ-25.-T



Motrac Hydraulik GmbH
Siemensring 87 - D-47877 Willich
fon +49-(0)2154-8162.0 - fax +49-(0)2154-8162.499
e-mail info.miw@motracindustries.com
internet www.motracindustries.com

IZ-110-601-00

(subject to change)



Ordering example:

RVZ - 25A - T
| | |
A **B** **C**

Model code:

- | | |
|---|---|
| A design
check valve plate
with mounting interface DIN 24340 form A
sandwichplate design | B size and material
25A = aluminum (F37)
25S = steel (9SMnPb28K resp. GGG-40) |
| | C function mode
T = check valve in the "T" channel |

Technical Data:

nominal pressure:	250 bar (A) 350 bar (S)
nominal flow:	240 l/min
weight:	3.2 / 9.9 kg (A/S)
crack pressure:	0.2 - 0.3 bar (standard), higher pressure on request
free flow direction:	see symbol
included:	3 pcs. O-Ring 28.17 x 3.53 3 pcs. O-Ring 14.00 x 2.65 3 pcs. O-Ring 34.00 x 2.50 3 pcs. O-Ring 16.00 x 1.50