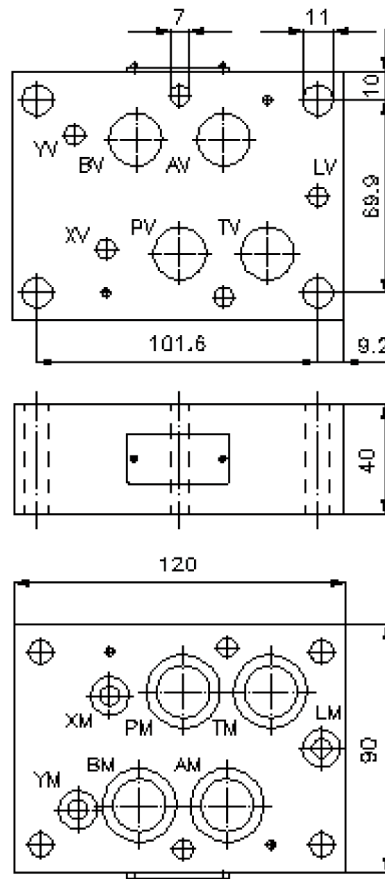
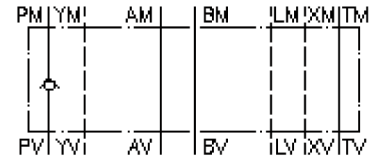


check valve plate CETOP 7 ((sandwich plate) in P)

RVZ-16S-P

IZ-110-500-00

(subject to change)



check valve plate CETOP 7 ((sandwich plate) in P)

RVZ-16S-P



Motrac Hydraulik GmbH
Siemensring 87 - D-47877 Willich
fon +49-(0)2154-8162.0 - fax +49-(0)2154-8162.499
e-mail info.miw@motracindustries.com
internet www.motracindustries.com

IZ-110-500-00

(subject to change)



Ordering example:

RVZ - 16S - P
| | |
A **B** **C**

Model code:

- | | |
|---|---|
| A design
check valve plate
with mounting interface DIN 24340 form A
sandwichplate design | B size and material
16S = steel (9SMnPb28K resp. GGG-40) |
| | C function mode
P = check valve in the "P" channel |

Technical Data:

nominal pressure:	350 bar
nominal flow:	140 l/min
weight:	2.7 kg
crack pressure:	0.2 - 0.3 bar (standard), higher pressure on request
free flow direction:	see symbol
included:	3 pcs. O-Ring 22.22 x 2.62 3 pcs. O-Ring 9.19 x 2.62 2 pcs. O-Ring 25.00 x 2.50