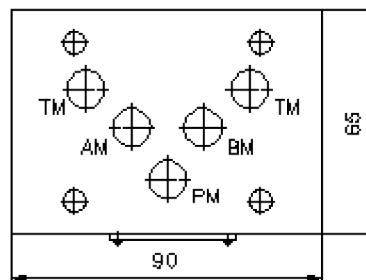
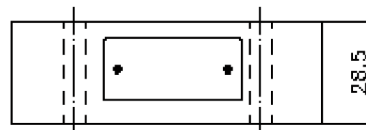
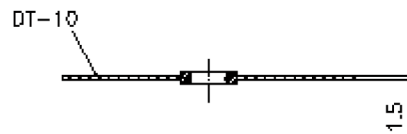
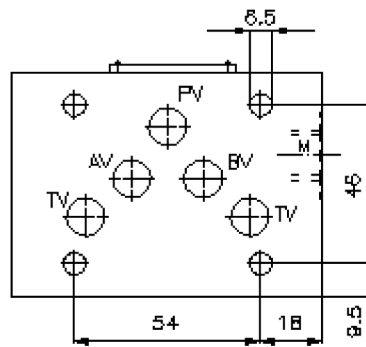
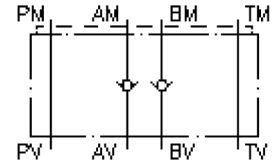


check valve plate CETOP 5 ((sandwich plate) in A+B)

RZ-10S-A+B

IZ-110-405-00

(subject to change)



check valve plate CETOP 5 ((sandwich plate) in A+B)

RZ-10S-A+B



Motrac Hydraulik GmbH
Siemensring 87 - D-47877 Willich
fon +49-(0)2154-8162.0 - fax +49-(0)2154-8162.499
e-mail info.miw@motracindustries.com
internet www.motracindustries.com

IZ-110-405-00

(subject to change)



Ordering example:

RZ - 10S - A+B
| | |
A **B** **C**

Model code:

- | | |
|---|---|
| A design check valve plate with mounting interface DIN 24340 form A sandwichplate design | B size and material 10S = steel (9SMnPb28K resp. GGG-40) |
| | C function mode A+B = check valve in the "A+B" channel |

Technical Data:

| | |
|-----------------------------|--|
| nominal pressure: | 350 bar |
| nominal flow: | 50 l/min |
| weight: | 1.1 kg |
| crack pressure: | 0.2 - 0.3 bar |
| free flow direction: | see symbol |
| included: | DT-10 = sealing plate with vulcanized O-ring (Viton FPM) |