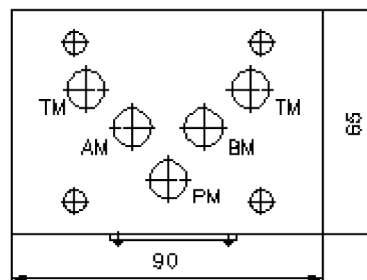
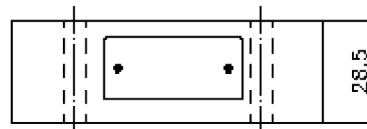
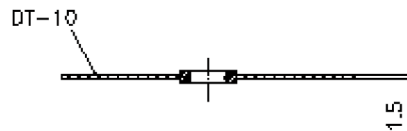
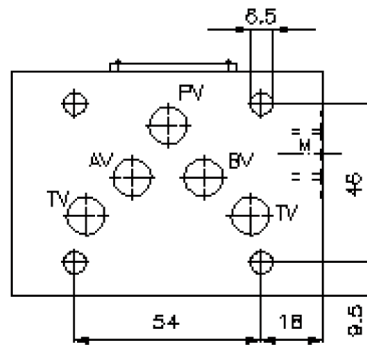
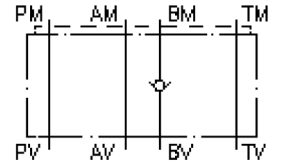


check valve plate CETOP 5 ((sandwich plate) in B)

RZ-10S-B

IZ-110-404-00

(subject to change)



check valve plate CETOP 5 ((sandwich plate) in B)

RZ-10S-B



Motrac Hydraulik GmbH
Siemensring 87 - D-47877 Willich
fon +49-(0)2154-8162.0 - fax +49-(0)2154-8162.499
e-mail info.miw@motracindustries.com
internet www.motracindustries.com

IZ-110-404-00

(subject to change)



Ordering example:

RZ - 10S - B
| | |
A **B** **C**

Model code:

- | | |
|---|---|
| A design
check valve plate
with mounting interface DIN 24340 form A
sandwichplate design | B size and material
10S = steel (9SMnPb28K resp. GGG-40) |
| | C function mode
B = check valve in the "B" channel |

Technical Data:

nominal pressure:	350 bar
nominal flow:	50 l/min
weight:	1.1 kg
crack pressure:	0.2 - 0.3 bar
free flow direction:	see symbol
included:	DT-10 = sealing plate with vulcanized O-ring (Viton FPM)