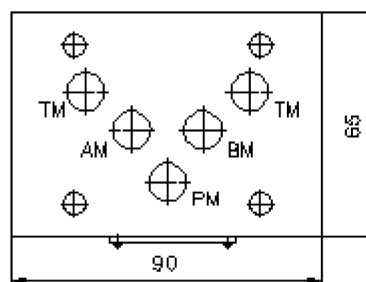
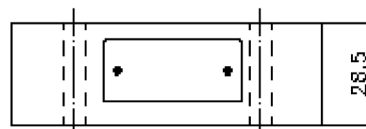
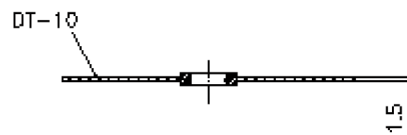
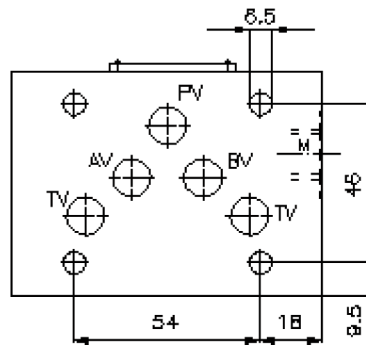
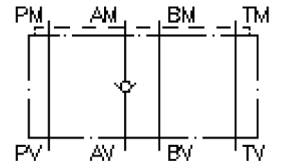


# check valve plate CETOP 5 ((sandwich plate) in A)

RZ-10S-A

IZ-110-403-00

(subject to change)



# check valve plate CETOP 5 ((sandwich plate) in A)

RZ-10S-A



Motrac Hydraulik GmbH  
Siemensring 87 - D-47877 Willich  
fon +49-(0)2154-8162.0 - fax +49-(0)2154-8162.499  
e-mail info.miw@motracindustries.com  
internet www.motracindustries.com

IZ-110-403-00

(subject to change)



## Ordering example:

RZ   - 10S - A  
|        |        |  
**A**    **B**    **C**

## Model code:

- |   |   |
|---|---|
| <b>A</b> <b>design</b><br>check valve plate<br>with mounting interface DIN 24340 form A<br>sandwichplate design | <b>B</b> <b>size and material</b><br>10S = steel (9SMnPb28K resp. GGG-40) |
|   | <b>C</b> <b>function mode</b><br>A = check valve in the "A" channel       |

## Technical Data:

|                             |  |
|-----------------------------|--|
| <b>nominal pressure:</b>    | 350 bar  |
| <b>nominal flow:</b>        | 50 l/min   |
| <b>weight:</b>              | 1.1 kg   |
| <b>crack pressure:</b>      | 0.2 - 0.3 bar  |
| <b>free flow direction:</b> | see symbol   |
| <b>included:</b>            | DT-10 = sealing plate with vulcanized O-ring (Viton FPM) |