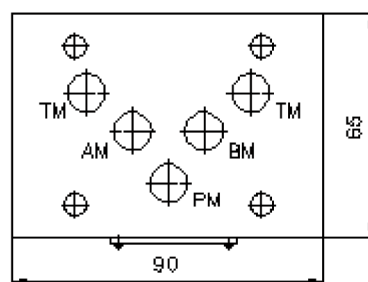
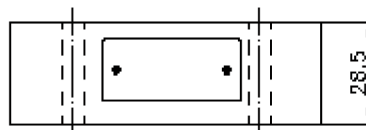
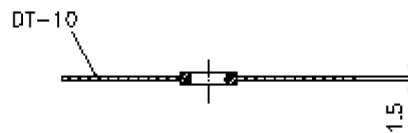
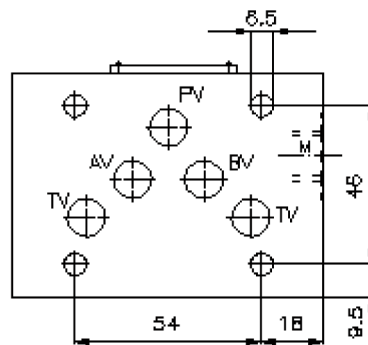
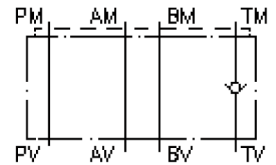


# check valve plate CETOP 5 ((sandwich plate) in T)

RZ-10S-T

IZ-110-401-00

(subject to change)



# check valve plate CETOP 5 ((sandwich plate) in T)

RZ-10S-T



Motrac Hydraulik GmbH  
Siemensring 87 - D-47877 Willich  
fon +49-(0)2154-8162.0 - fax +49-(0)2154-8162.499  
e-mail info.miw@motracindustries.com  
internet www.motracindustries.com

IZ-110-401-00

(subject to change)



## Ordering example:

RZ   - 10S - T  
|        |        |  
**A**    **B**    **C**

## Model code:

- |          |  |          |  |
|----------|--|----------|--|
| <b>A</b> | <b>design</b><br>check valve plate<br>with mounting interface DIN 24340 form A<br>sandwichplate design | <b>B</b> | <b>size and material</b><br>10S = steel (9SMnPb28K resp. GGG-40) |
|          |  | <b>C</b> | <b>function mode</b><br>T = check valve in the "T" channel       |

## Technical Data:

<b>nominal pressure:</b>	350 bar
<b>nominal flow:</b>	50 l/min
<b>weight:</b>	1.1 kg
<b>crack pressure:</b>	0.2 - 0.3 bar
<b>free flow direction:</b>	see symbol
<b>included:</b>	DT-10 = sealing plate with vulcanized O-ring (Viton FPM)