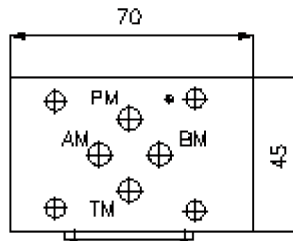
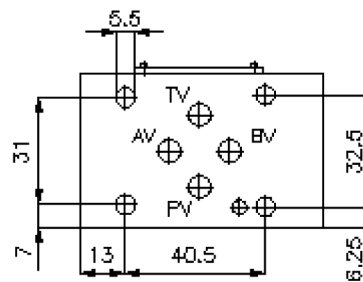
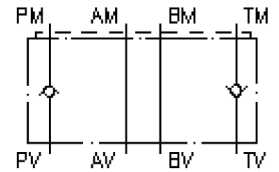


check valve plate CETOP 3 ((sandwich plate) in P+T)

RZ-06S-P+T

IZ-110-203-00

(subject to change)



check valve plate CETOP 3 ((sandwich plate) in P+T)

RZ-06S-P+T



Motrac Hydraulik GmbH
Siemensring 87 - D-47877 Willich
fon +49-(0)2154-8162.0 - fax +49-(0)2154-8162.499
e-mail info.miw@motracindustries.com
internet www.motracindustries.com

IZ-110-203-00

(subject to change)



Ordering example:

RZ - 06S - P+T
| | |
A **B** **C**

Model code:

- | | |
|---|---|
| A design
check valve plate
with mounting interface DIN 24340 form A
sandwichplate design | B size and material
06S = steel (9SMnPb28K resp. GGG-40) |
| | C function mode
P+T = check valve in the "T" channel |

Technical Data:

nominal pressure:	350 bar
nominal flow:	30 l/min
weight:	0.5 kg
crack pressure:	0.2 - 0.3 bar (standard), higher pressure on request
free flow direction:	see symbol
included:	DT-06 = sealing plate with vulcanized O-ring (Viton FPM)