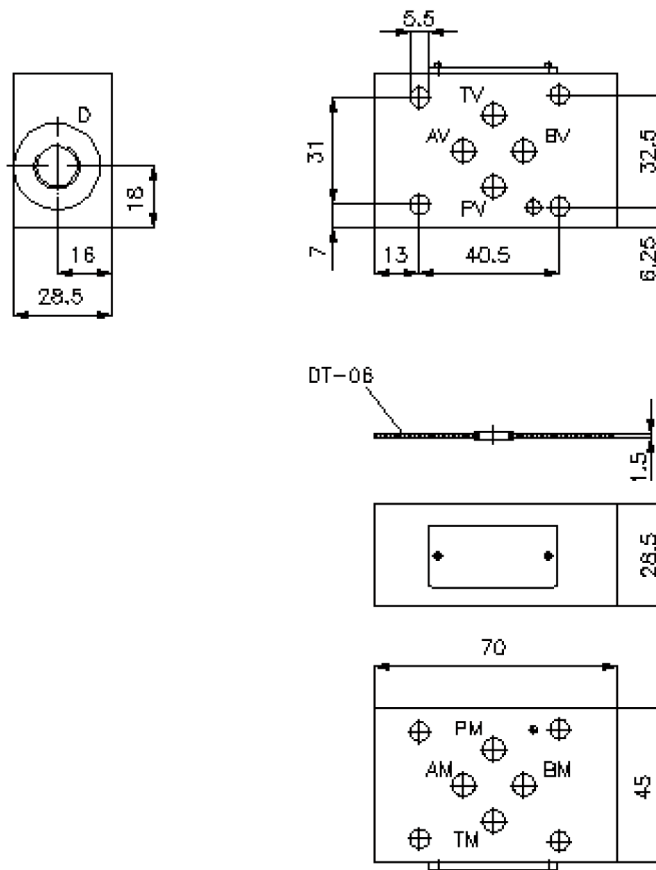
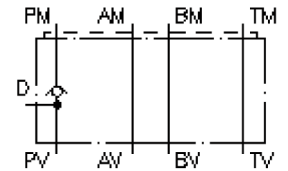


# check valve plate CETOP 3 ((sandwich plate) in PD)

RZ-06S-PD

IZ-110-201-00

(subject to change)



# check valve plate CETOP 3 ((sandwich plate) in PD)

RZ-06S-PD



Motrac Hydraulik GmbH  
Siemensring 87 - D-47877 Willich  
fon +49-(0)2154-8162.0 - fax +49-(0)2154-8162.499  
e-mail info.miw@motracindustries.com  
internet www.motracindustries.com

IZ-110-201-00

(subject to change)



## Ordering example:

RZ - 06S - PD  
|     |     |  
**A**   **B**   **C**

## Model code:

- |   |   |
|---|---|
| <b>A</b> <b>design</b><br>check valve plate<br>with mounting interface DIN 24340 form A<br>sandwichplate design | <b>B</b> <b>size and material</b><br>06S = steel (9SMnPb28K resp. GGG-40)                     |
|   | <b>C</b> <b>function mode</b><br>PD = check valve in the "P" channel with<br>accumulator port |

## Technical Data:

<b>nominal pressure:</b>	350 bar
<b>nominal flow:</b>	30 l/min
<b>weight:</b>	0.7 kg
<b>crack pressure:</b>	6.0 bar
<b>free flow direction:</b>	see symbol
<b>included:</b>	DT-06 = sealing plate with vulcanized O-ring (Viton FPM)