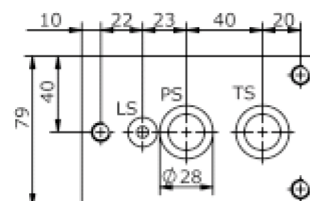
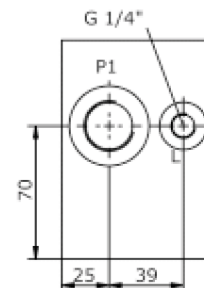
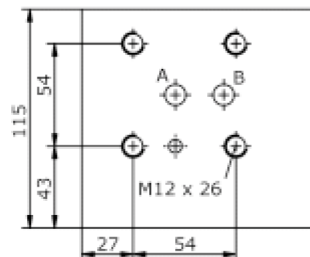
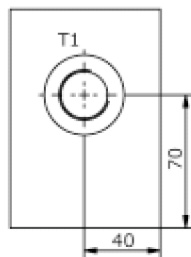
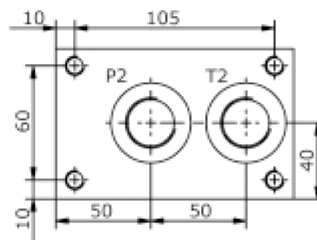
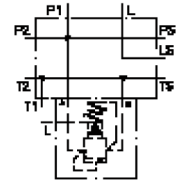


# base block, stack valve, CETOP 5 (with interface DIN 24 340 for relief valve)

MBSS-10.-BS01-DBV/B06

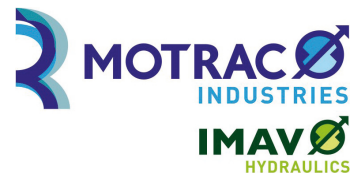
**IM-905-250-00**

(subject to change)



# base block, stack valve, CETOP 5 (with interface DIN 24 340 for relief valve)

MBSS-10.-BS01-DBV/B06



Motrac Hydraulik GmbH  
Siemensring 87 - D-47877 Willich  
fon +49-(0)2154-8162.0 - fax +49-(0)2154-8162.499  
e-mail info.miw@motracindustries.com  
internet www.motracindustries.com

IM-905-250-00

(subject to change)

## Ordering example:

MBS    S    - 10A - BS01 - DBV / B06  
|        |        |        |        |        |  
**A**    **B**    **C**    **D**    **E**    **F**

## Model code:

- |   |  |
|---|--|
| <b>A</b> <b>design</b><br>IMAV-stack system   | <b>D</b> <b>special base manifold</b><br>special base manifold                     |
| <b>B</b> <b>function mode</b><br>ports at the side  | <b>E</b> <b>for relief valve (DBV)</b><br>with mounting interface DIN 24340 form E |
| <b>C</b> <b>size and material</b><br>10A = aluminum (F37)<br>10S = steel (9SMnPb28K resp. GGG-40) | <b>F</b> <b>port size P and T</b><br>B06 = BSPP 3/4"                               |

## Technical Data:

**nominal pressure:** 210 bar (A)  
350 bar (S)

**weight:** 2.8 / 6.6 kg (A/S)

**included:** included  
2 pcs. O-Ring 21.82 x 3.53  
1 pcs. O-Ring 10.77 x 2.62