

**base block, stack valve, CETOP 3
(with relief valve
+ 1 CETOP 3 valve, port side)**

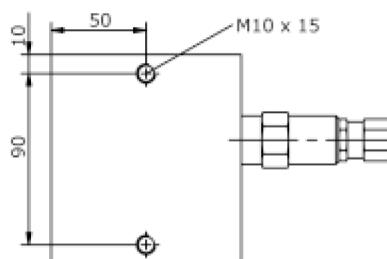
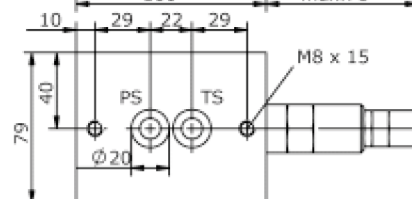
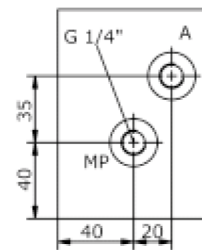
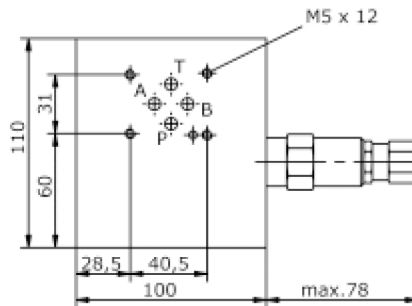
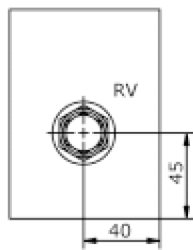
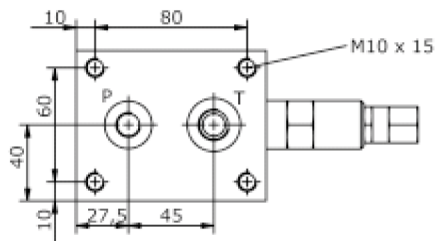
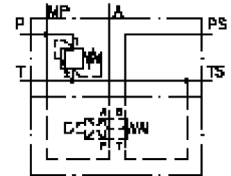
MLS-06.-B11/B...-.../..



Motrac Hydraulik GmbH
Siemensring 87 - D-47877 Willich
fon +49-(0)2154-8162.0 - fax +49-(0)2154-8162.499
e-mail info.mhw@motrac-hydraulics.com
internet www.motrac-hydraulics.com

IM-810-153-00

(subject to change)



base block, stack valve, CETOP 3 (with relief valve + 1 CETOP 3 valve, port side)

MLS-06.-B11/B..-.../..



Motrac Hydraulik GmbH
Siemensring 87 - D-47877 Willich
fon +49-(0)2154-8162.0 - fax +49-(0)2154-8162.499
e-mail info.mhw@motrac-hydraulics.com
internet www.motrac-hydraulics.com

IM-810-153-00

(subject to change)

Ordering example:

MLS - 06A - B11 / B04 - 01 - C / 18
| | | | | | |
A **B** **C** **D** **E** **F** **G**

Model code:

- | | |
|--|--|
| <p>A design
IMAV-stack system</p> <p>B size and material
06A = aluminum (F37)
06S = steel (9SMnPb28K resp. GGG-40)</p> <p>C base manifold
base block</p> <p>D port size P, T and A
B02 = A and P: BSPP 1/4" ; T: BSPP 3/8"
B03 = A and P: BSPP 3/8"; T: BSPP 1/2"
B04 = A and P: BSPP 1/2"; T: BSPP 3/4"
B03-B04 = A: BSPP 3/8" ; P: BSPP 1/2" ;
T: BSPP 3/4"</p> <p>E relief valve
01 = RV1-10.-.. (direct acting) see data sheet no.: <u>MP-100-100-00</u>
05 = RV5-10.-.. (direct acting) see data sheet no.: <u>MP-170-101-00</u>
PS = RVPS-10.-.. (pilot operated) see data sheet no.: <u>CP-110-101-00</u></p> <p>F adjustment
J = internal (only RV1 + RV5)
C = cap
K = handknob
S = screw adjustment</p> | <p>G pressure range
RV1-10.-..
03 = 3.5 - 20 bar
09 = 7.0 - 62 bar
18 = 17.0 - 124 bar
36 = 34.0 - 250 bar
RV5-10.-..
03 = 3.5 - 20 bar
20 = 7.0 - 140 bar
35 = 17.0 - 240 bar
RVPS-10.-..
15 = 3.4 - 105 bar
30 = 3.4 - 210 bar
50 = 3.4 - 350 bar</p> |
|--|--|

Technical Data:

nominal pressure: 210 bar (A)
350 bar (S)

weight: 2.5 / 5.3 kg (A/S)

included: included
2 pcs. O-Ring 15.10 x 2.70