

single mounting block CETOP 3 (for CETOP 5 valve load-sensing-system-L)

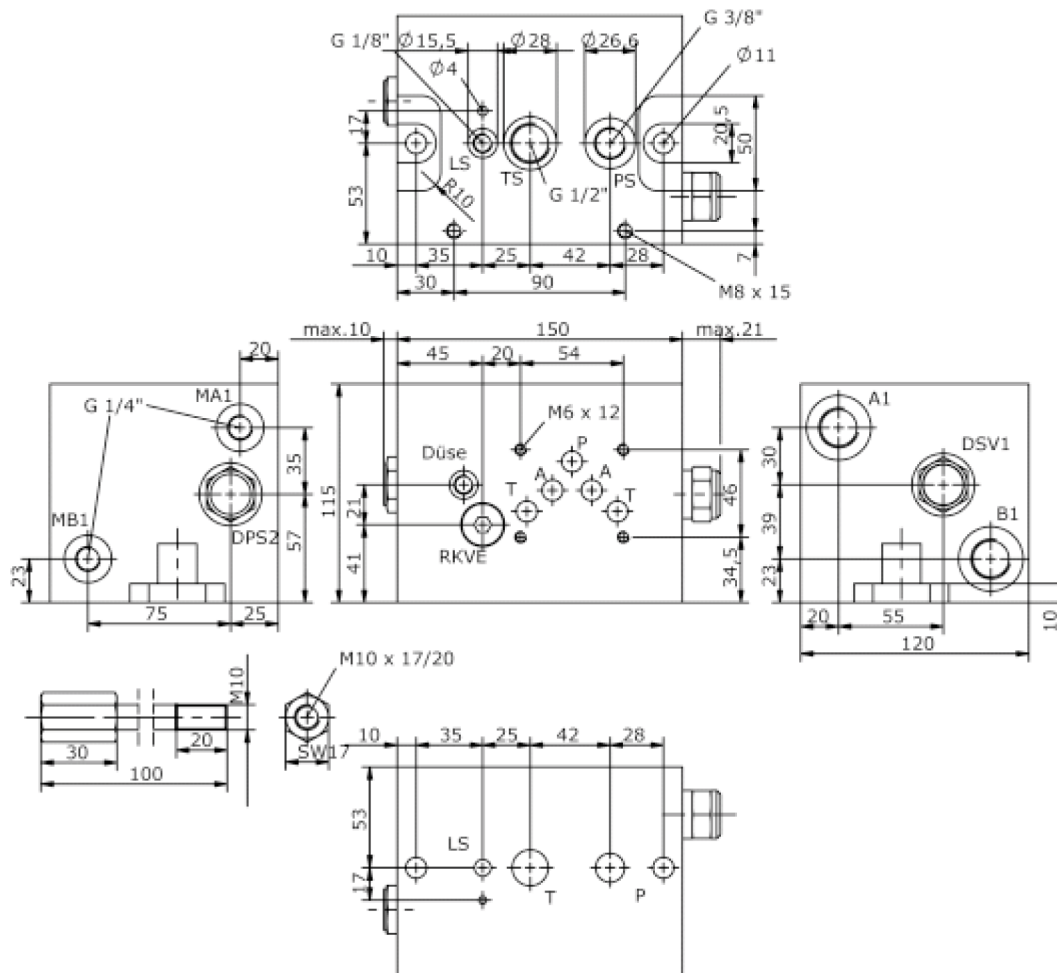
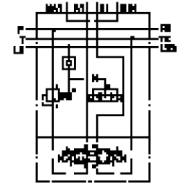
MBLS-06.-1AL10/B04



Motrac Hydraulik GmbH
Siemensring 87 - D-47877 Willich
fon +49-(0)2154-8162.0 - fax +49-(0)2154-8162.499
e-mail info.mhw@motrac-hydraulics.com
internet www.motrac-hydraulics.com

IM-745-251-00

(subject to change)



single mounting block CETOP 3 (for CETOP 5 valve load-sensing-system-L)

MBLS-06.-1AL10/B04



Motrac Hydraulik GmbH
Siemensring 87 - D-47877 Willich
fon +49-(0)2154-8162.0 - fax +49-(0)2154-8162.499
e-mail info.mhw@motrac-hydraulics.com
internet www.motrac-hydraulics.com

IM-745-251-00

(subject to change)

Ordering example:

MBLS - 06A - 1A - L - 10 / B04
| | | | | |
A **B** **C** **D** **E** **F**

Model code:

- | | |
|---|---|
| A design
IMAV-stack system | D function mode
left |
| B size and material
06A = aluminum (F37)
06S = steel (9SMnPb28K resp. GGG-40) | E size of directional control valves
interface for directional valve CETOP 5 |
| C qty. of directional valves
number of directional valves | F port size A1 and B1
B04 = BSPP 1/2" |

Technical Data:

nominal pressure:	210 bar (A) 350 bar (S)
weight:	5.9 / 12.1 kg (A/S)
logic element valve:	DPS2-10.-.. see datasheet no. MD-750-101-00
shuttle valve:	DSV1-10.-B-0 see datasheet no. MC-320-100-00
check valve:	RKVE-06 see datasheet no. IC-160-000-00
included:	included 1 pcs. O-Ring 10.77 x 2.62 1 pcs. O-Ring 15.10 x 2.70 1 pcs. O-Ring 22.22 x 2.62 2 pcs. stack screws