

single mounting block CETOP 3 (for CETOP 3 valve load-sensing-system-L)

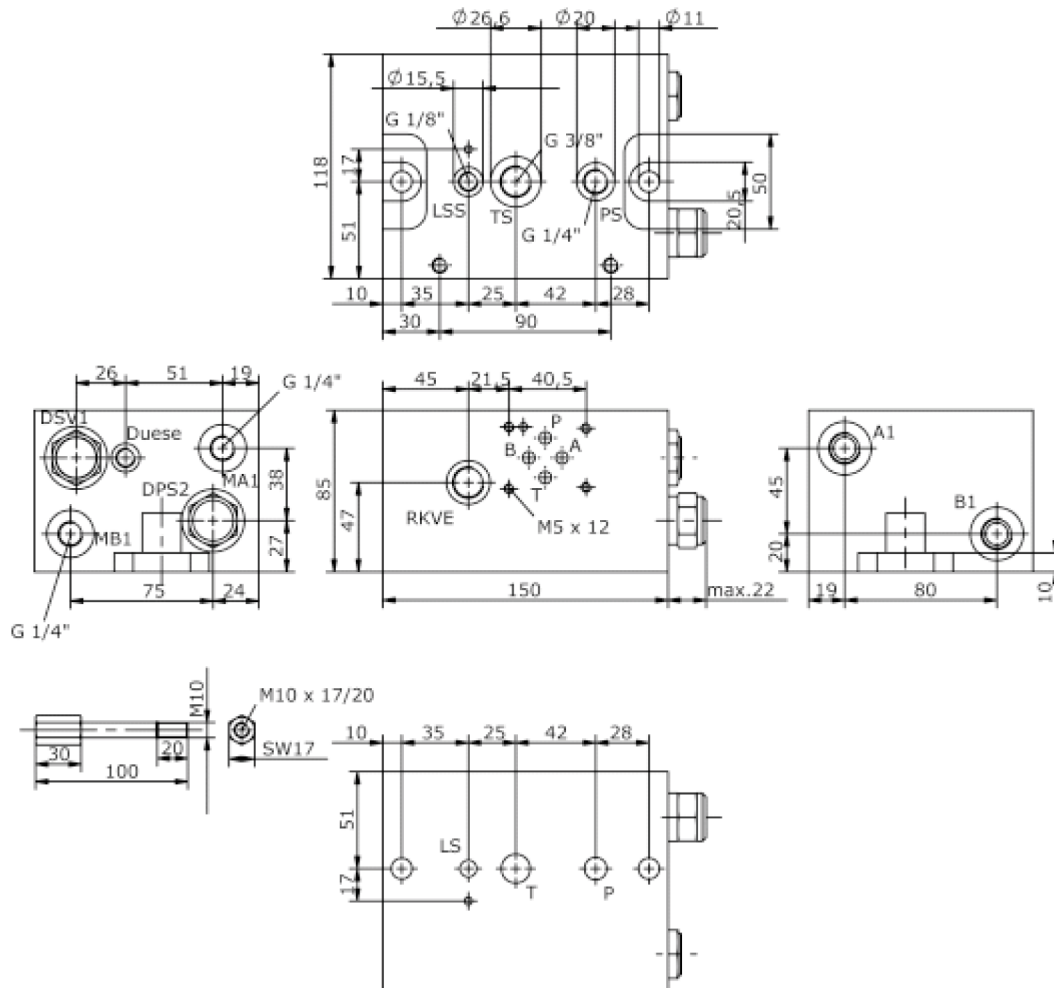
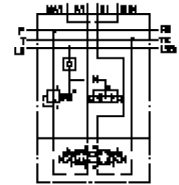
MBLS-06.-1AL/B03



Motrac Hydraulik GmbH
Siemensring 87 - D-47877 Willich
fon +49-(0)2154-8162.0 - fax +49-(0)2154-8162.499
e-mail info.mhw@motrac-hydraulics.com
internet www.motrac-hydraulics.com

IM-745-151-00

(subject to change)



single mounting block CETOP 3 (for CETOP 3 valve load-sensing-system-L)

MBLS-06.-1AL/B03



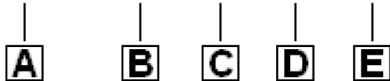
Motrac Hydraulik GmbH
Siemensring 87 - D-47877 Willich
fon +49-(0)2154-8162.0 - fax +49-(0)2154-8162.499
e-mail info.mhw@motrac-hydraulics.com
internet www.motrac-hydraulics.com

IM-745-151-00

(subject to change)

Ordering example:

MBLS - 06A - 1A - L / B03



Model code:

- | | |
|---|--|
| A design IMAV-stack system | C qty. of directional valves number of directional valves |
| B size and material 06A = aluminum (F37) 06S = steel (9SMnPb28K resp. GGG-40) | D function mode left |
| | E port size A1 and B1 B03 = BSPP 3/8" |

Technical Data:

| | |
|-----------------------------|---|
| nominal pressure: | 210 bar (A) 350 bar (S) |
| weight: | 4.3 / 8.9 kg (A/S) |
| logic element valve: | DPS2-10.-.. see datasheet no. MD-750-101-00 |
| shuttle valve: | DSV1-10.-B-0 see datasheet no. MC-320-100-00 |
| check valve: | RKVE-06 see datasheet no. IC-160-000-00 |
| included: | included 1 pcs. O-Ring 10.77 x 2.62 1 pcs. O-Ring 15.10 x 2.70 1 pcs. O-Ring 22.22 x 2.62 2 pcs. stack screws |