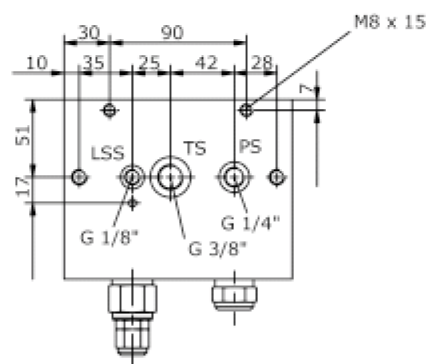
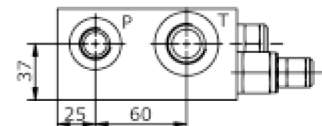
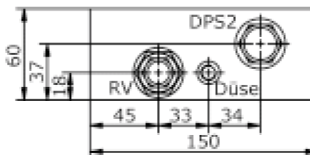
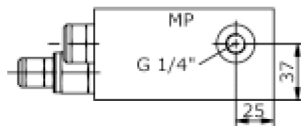
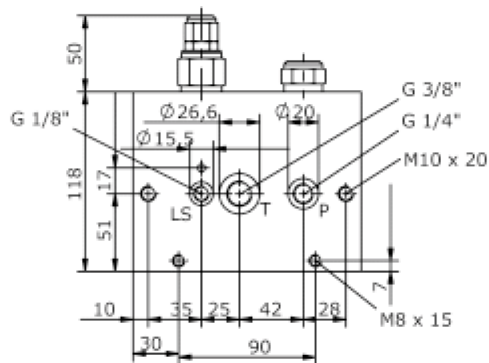
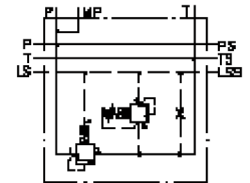


# base block, stack valve, CETOP 3 (for MBL5-06-...- load-sensing-system)

MBLS-06.-B40/B04-.../..

IM-715-103-00

(subject to change)



# base block, stack valve, CETOP 3 (for MBL5-06-...- load-sensing-system)

MBLS-06.-B40/B04-.../..



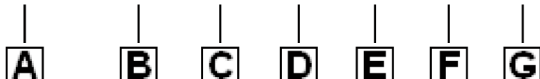
Motrac Hydraulik GmbH  
Siemensring 87 - D-47877 Willich  
fon +49-(0)2154-8162.0 - fax +49-(0)2154-8162.499  
e-mail info.mhw@motrac-hydraulics.com  
internet www.motrac-hydraulics.com

**IM-715-103-00**

(subject to change)

## Ordering example:

MBLS - 06A - B40 / B04 - 05 - C / 35



## Model code:

- |   |  |
|---|--|
| <p><b>A</b> <b>design</b><br/>IMAV-stack system</p> <p><b>B</b> <b>size and material</b><br/>06A = aluminum (F37)<br/>06S = steel (9SMnPb28K resp. GGG-40)</p> <p><b>C</b> <b>base manifold</b><br/>base block</p> <p><b>D</b> <b>port size P and T</b><br/>B04 = P: BSPP 1/2" and T: BSPP 3/4"</p> <p><b>E</b> <b>relief valve</b><br/>01 = RV1-10.-... (direct acting) see data sheet no.: <u>MP-100-100-00</u><br/>05 = RV5-10.-... (direct acting) see data sheet no.: <u>MP-170-101-00</u><br/>PS = RVPS-10.-... (pilot operated) see data sheet no.: <u>CP-110-101-00</u></p> <p><b>F</b> <b>adjustment</b><br/>J = internal (only RV1 + RV5)<br/>C = cap<br/>K = handknob<br/>S = screw adjustment</p> | <p><b>G</b> <b>pressure range</b><br/>RV1-10.-...<br/>03 = 3.5 - 20 bar<br/>09 = 7.0 - 62 bar<br/>18 = 17.0 - 124 bar<br/>36 = 34.0 - 250 bar<br/>RV5-10.-...<br/>03 = 3.5 - 20 bar<br/>20 = 7.0 - 140 bar<br/>35 = 17.0 - 240 bar<br/>RVPS-10.-...<br/>15 = 3.4 - 105 bar<br/>30 = 3.4 - 210 bar<br/>50 = 3.4 - 350 bar</p> |
|---|--|

## Technical Data:

- |                             |  |
|-----------------------------|--|
| <b>nominal pressure:</b>    | 210 bar (A)<br>350 bar (S)   |
| <b>weight:</b>              | 3.1 / 6.5 kg (A/S)   |
| <b>logic element valve:</b> | DPS2-10.-... see datasheet no. <u>MD-750-101-00</u>  |
| <b>included:</b>            | included<br>2 pcs. O-Ring 10.77 x 2.62<br>2 pcs. O-Ring 15.10 x 2.70<br>2 pcs. O-Ring 22.22 x 2.62 |