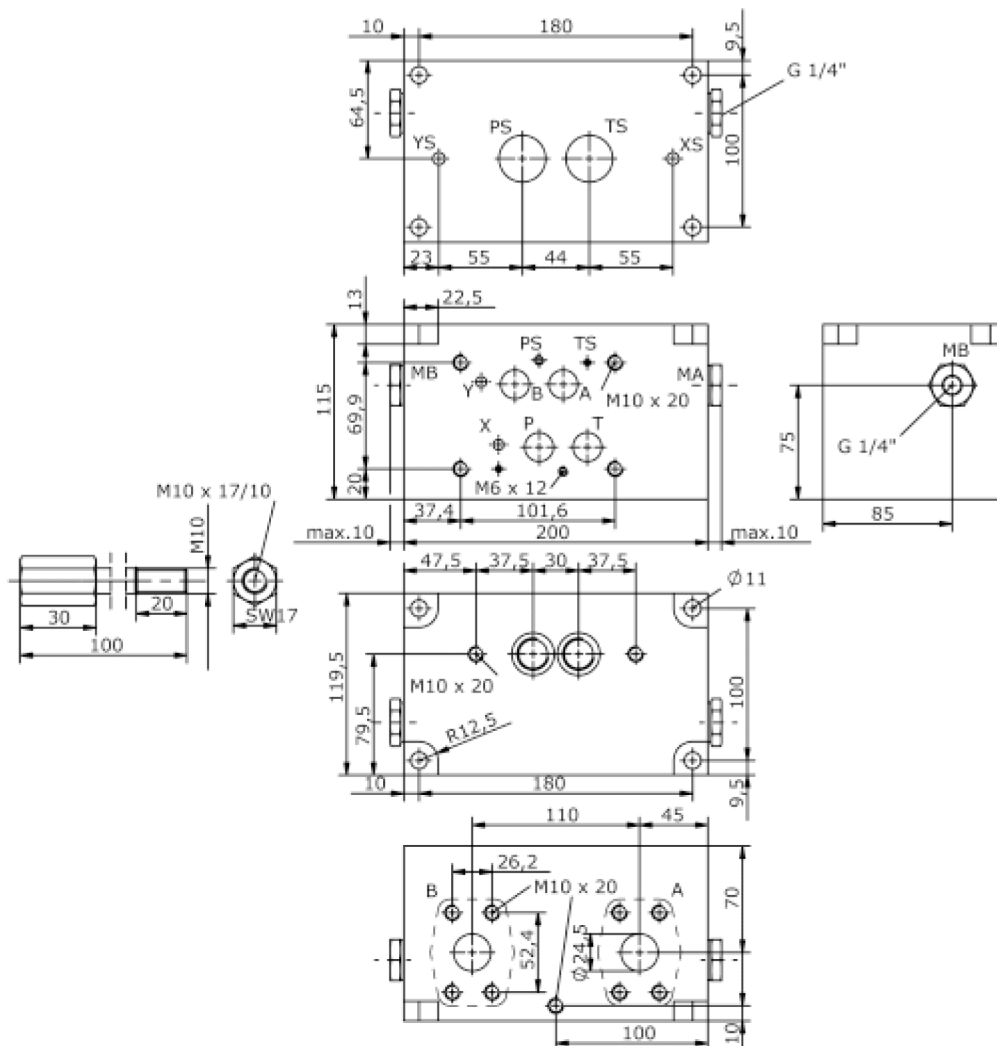
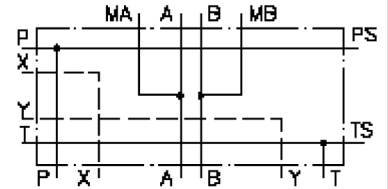


# adapter block from CETOP 7 to 5 ((stack screws included) A+B with SAE)

MBS-16./10.-1A/SAE 1-3000

IM-645-300-00

(subject to change)



# adapter block from CETOP 7 to 5 ((stack screws included) A+B with SAE)

MBS-16./10.-1A/SAE 1-3000



Motrac Hydraulik GmbH  
Siemensring 87 - D-47877 Willich  
fon +49-(0)2154-8162.0 - fax +49-(0)2154-8162.499  
e-mail info.miw@motracindustries.com  
internet www.motracindustries.com

**IM-645-300-00**

(subject to change)

## Ordering example:

MBS - 16A/10A - 1A / SAE 1-3000

**A**

**B**

**C**

**D**

## Model code:

- A design**  
IMAV-stack system
- B size and material**  
16A/10A = aluminum (F37)  
16S/10S = steel (9SMnPb28K resp. GGG-40)  
adapter-plate

**C qty. of directional valves**  
number of directional valves

**D port size A and B**  
SAE 1" 3000 PSI

## Technical Data:

- nominal pressure:** 210 bar (A)  
350 bar (S)
- weight:** 7.1 / 14.5 kg (A/S)
- included:** included:  
2 pcs. O-ring 21.82 x 3.53  
4 pcs. M10 x 120 DIN 912