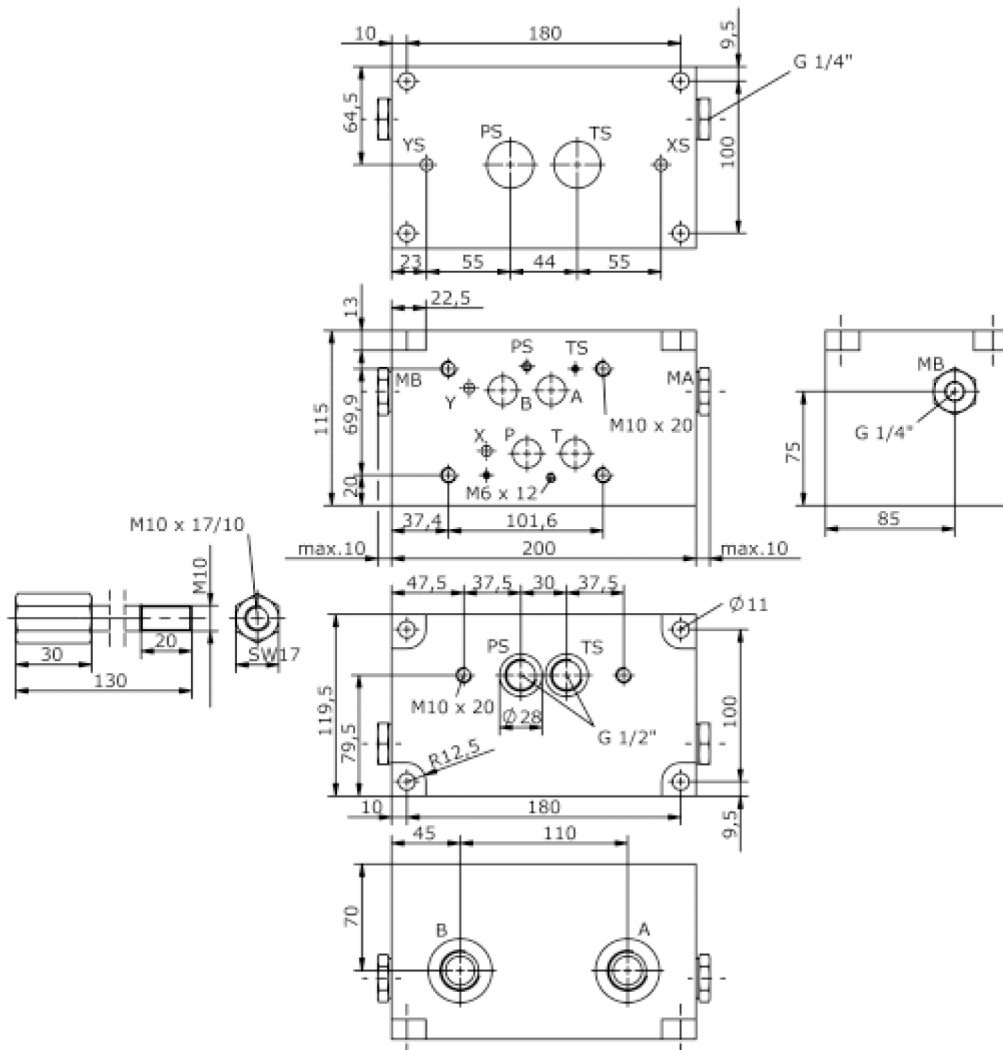
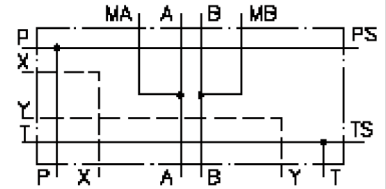


adapter block from CETOP 7 to 5 ((stack screws included) A+B with BSPP) MBS-16./10.-1A/B..

IM-645-250-00

(subject to change)



adapter block from CETOP 7 to 5 ((stack screws included) A+B with BSPP)

MBS-16./10.-1A/B..



Motrac Hydraulik GmbH
Siemensring 87 - D-47877 Willich
fon +49-(0)2154-8162.0 - fax +49-(0)2154-8162.499
e-mail info.miw@motracindustries.com
internet www.motracindustries.com

IM-645-250-00

(subject to change)

Ordering example:

MBS - 16A/10A - 1A / B08

A	B	C	D

Model code:

- | | |
|--|---|
| <p>A design
IMAV-stack system</p> <p>B size and material
16A/10A = aluminum (F37)
16S/10S = steel (9SMnPb28K resp. GGG-40)
adapter-plate</p> | <p>C qty. of directional valves
number of directional valves</p> <p>D port size A and B
B06 = BSPP 3/4"
B08 = BSPP 1"
B10 = BSPP 1 1/4"</p> |
|--|---|

Technical Data:

- nominal pressure:** 210 bar (A)
350 bar (S)
- weight:** 7.1 / 14.5 kg (A/S)
- included:** included:
2 pcs. O-ring 21.82 x 3.53
4 pcs. M10 x 120 DIN 912