

single mounting block CETOP 7 (stack screws included)

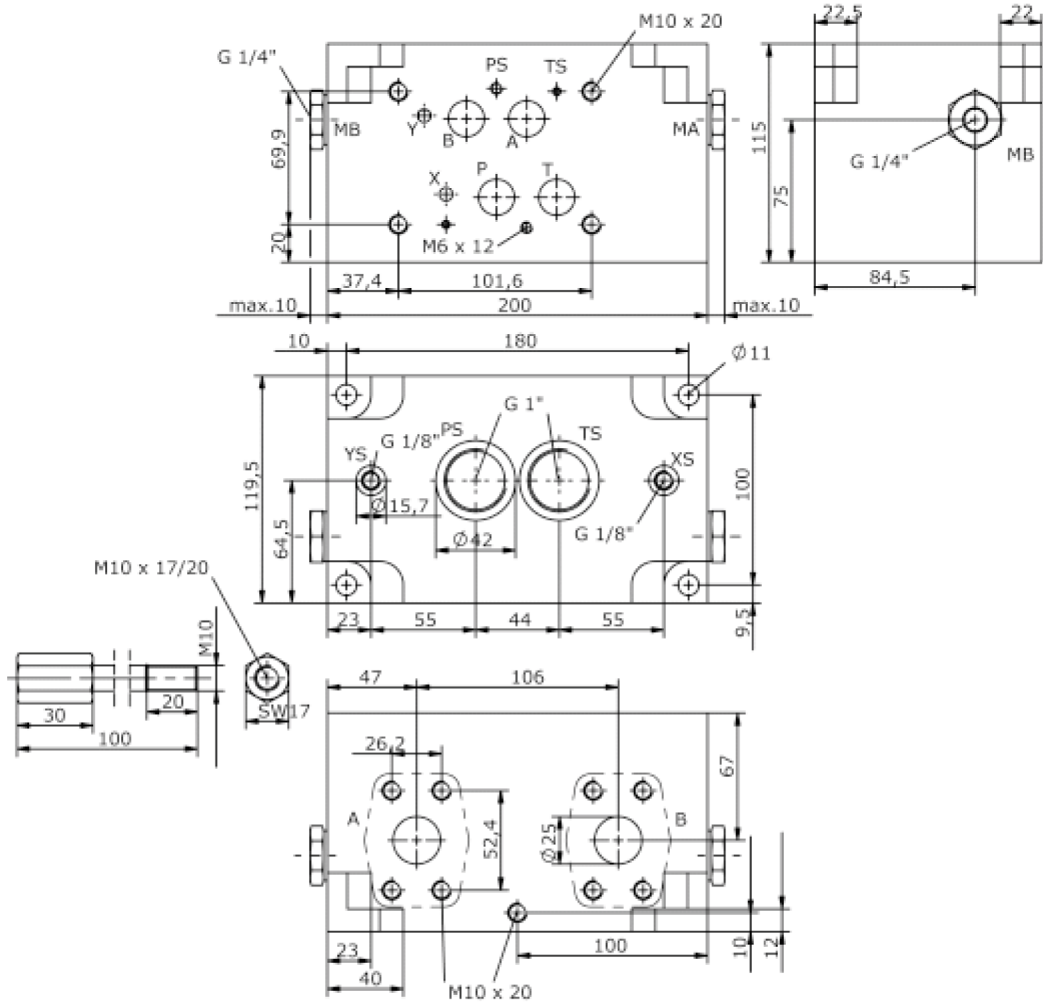
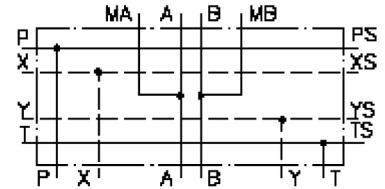
MBS-16.-1A/SAE 1-3000



Motrac Hydraulik GmbH
Siemensring 87 - D-47877 Willich
fon +49-(0)2154-8162.0 - fax +49-(0)2154-8162.499
e-mail info.mhw@motrac-hydraulics.com
internet www.motrac-hydraulics.com

IM-645-200-00

(subject to change)



single mounting block CETOP 7 (stack screws included)

MBS-16.-1A/SAE 1-3000



Motrac Hydraulik GmbH
Siemensring 87 - D-47877 Willich
fon +49-(0)2154-8162.0 - fax +49-(0)2154-8162.499
e-mail info.mhw@motrac-hydraulics.com
internet www.motrac-hydraulics.com

IM-645-200-00

(subject to change)

Ordering example:

MBS - 16A - 1A / SAE 1-3000

A **B** **C** **D**

Model code:

- | | |
|---|--|
| A design IMAV-stack system | C qty. of directional valves number of directional valves |
| B size and material 16A = aluminum (F37) 16S = steel (9SMnPb28K resp. GGG-40) | D port size A and B SAE 1" 3000 PSI |

Technical Data:

- | | |
|--------------------------|---|
| nominal pressure: | 210 bar (A) 350 bar (S) |
| weight: | 7.4 / 15.1 kg (A/S) |
| included: | included 2 pcs. O-Ring 12.42 x 1.78 2 pcs. O-Ring 36.09 x 3.53 4 pcs. stack screws |