

# single mounting block CETOP 7 (stack screws included)

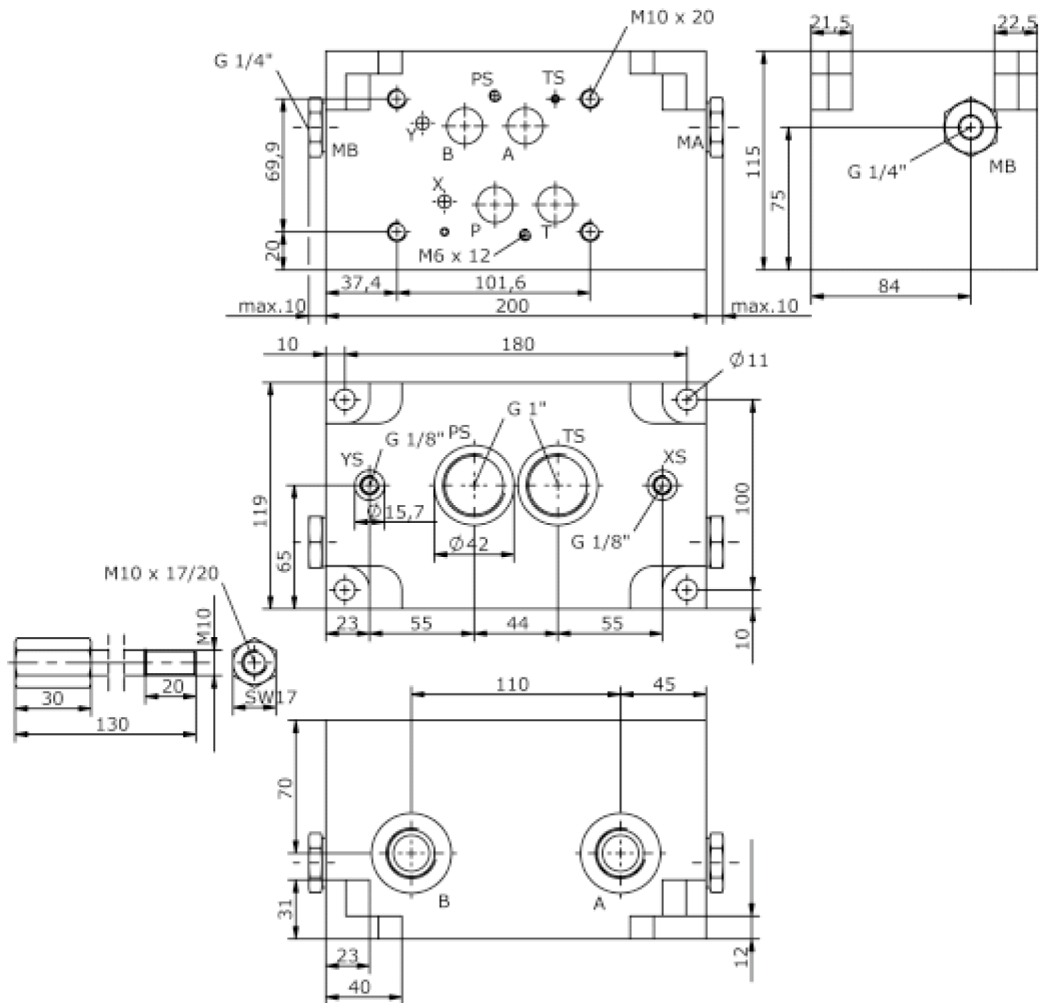
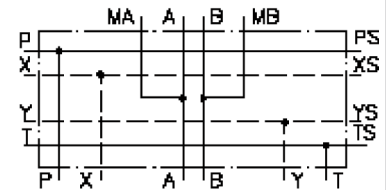
MBS-16.-1A/B..



Motrac Hydraulik GmbH  
Siemensring 87 - D-47877 Willich  
fon +49-(0)2154-8162.0 - fax +49-(0)2154-8162.499  
e-mail info.miw@motracindustries.com  
internet www.motracindustries.com

IM-645-100-00

(subject to change)



# single mounting block CETOP 7 (stack screws included)

MBS-16.-1A/B..



Motrac Hydraulik GmbH  
Siemensring 87 - D-47877 Willich  
fon +49-(0)2154-8162.0 - fax +49-(0)2154-8162.499  
e-mail info.miw@motracindustries.com  
internet www.motracindustries.com

**IM-645-100-00**

(subject to change)

## Ordering example:

MBS - 16A - 1A / B08



## Model code:

- |   |  |
|---|--|
| <p><b>A</b> <b>design</b><br/>IMAV-stack system</p> <p><b>B</b> <b>size and material</b><br/>16A = aluminum (F37)<br/>16S = steel (9SMnPb28K resp. GGG-40)</p> <p><b>C</b> <b>qty. of directional valves</b><br/>number of directional valves</p> | <p><b>D</b> <b>port size A and B</b><br/>B06 = BSPP 3/4"<br/>B08 = BSPP 1"<br/>B10 = BSPP 1 1/4"</p> |
|---|--|

## Technical Data:

- |                          |   |
|--------------------------|---|
| <b>nominal pressure:</b> | 210 bar (A)<br>350 bar (S)  |
| <b>weight:</b>           | 7.4 / 15.1 kg (A/S)   |
| <b>included:</b>         | included<br>2 pcs. O-Ring 12.42 x 1.78<br>2 pcs. O-Ring 36.09 x 3.53<br>4 pcs. stack screws |