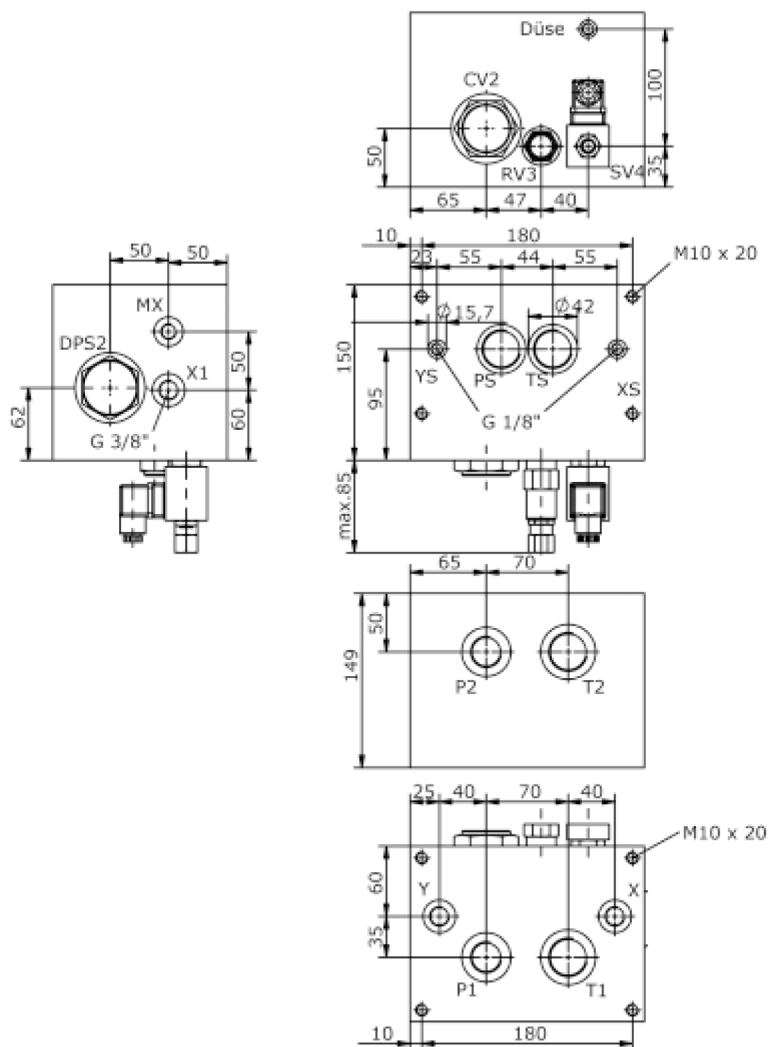
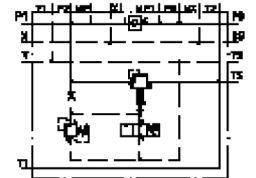


# base block, stack valve, CETOP 7 (with relief valve and electric release)

MBS-16A-B31/B...-/18-.....

IM-612-151-00

(subject to change)



# base block, stack valve, CETOP 7 (with relief valve and electric release)

MBS-16A-B31/B.-.../18-.....



Motrac Hydraulik GmbH  
Siemensring 87 - D-47877 Willich  
fon +49-(0)2154-8162.0 - fax +49-(0)2154-8162.499  
e-mail info.miw@motracindustries.com  
internet www.motracindustries.com

IM-612-151-00

(subject to change)



## Ordering example:

MBS - 16A - B31 / B08 - 03 - C / 18 - O - 024D - G

**A**   **B**   **C**   **D**   **E**   **F**   **G**   **H**   **I**   **J**

## Model code:

- |  |  |
|--|--|
| <p><b>A</b> <b>design</b><br/>IMAV-stack system</p> <p><b>B</b> <b>size and material</b><br/>16A = aluminum (F37)</p> <p><b>C</b> <b>base manifold</b><br/>base block</p> <p><b>D</b> <b>port size P and T</b><br/>B06 = P: BSPP 3/4" and T: BSPP 1"<br/>B08 = P: BSPP 1" and T: BSPP 1 1/4"<br/>B10 = P: BSPP 1 1/4" and T: BSPP 1 1/2"</p> <p><b>E</b> <b>relief valve</b><br/>05 = RV3-10.-.. (direct acting) see data sheet no.: <u>MP-130-101-00</u></p> <p><b>F</b> <b>adjustment</b><br/>J = internal<br/>C = cap</p> <p><b>G</b> <b>pressure range</b><br/>RV3-10.-..<br/>03 = 3.5 - 20 bar<br/>06 = 7.0 - 41 bar<br/>09 = 14.0 - 62 bar<br/>18 = 20.0 - 124 bar<br/>36 = 41.0 - 250 bar</p> | <p><b>H</b> <b>type: SV4-10.-..</b><br/>C = normally closed<br/>C = normally closed see data sheet no.: <u>MS-110-100-00</u><br/>0 = normally open<br/>0 = normally open see data sheet no.: <u>MS-310-100-00</u></p> <p><b>I</b> <b>voltage</b><br/>DC current:<br/>012D = 12V DC<br/>024D = 24V DC<br/>AC current:<br/>120A = 120V AC<br/>240A = 240V AC<br/>other voltage on request</p> <p><b>J</b> <b>power supply</b><br/>G = DIN 43650 connector, other connectors see data sheet no.: <u>MS-010-000-00</u></p> |
|--|--|

## Technical Data:

<b>nominal pressure:</b>	210 bar
<b>weight:</b>	12.9 kg
<b>logic element valve:</b>	DPS2-20.-.. see datasheet no. <u>MD-750-201-00</u>
<b>check valve:</b>	CV2-20.-.. see datasheet no. <u>MC-150-200-00</u>
<b>included:</b>	included 2 pcs. O-Ring 12.42 x 1.78 2 pcs. O-Ring 36.09 x 3.53