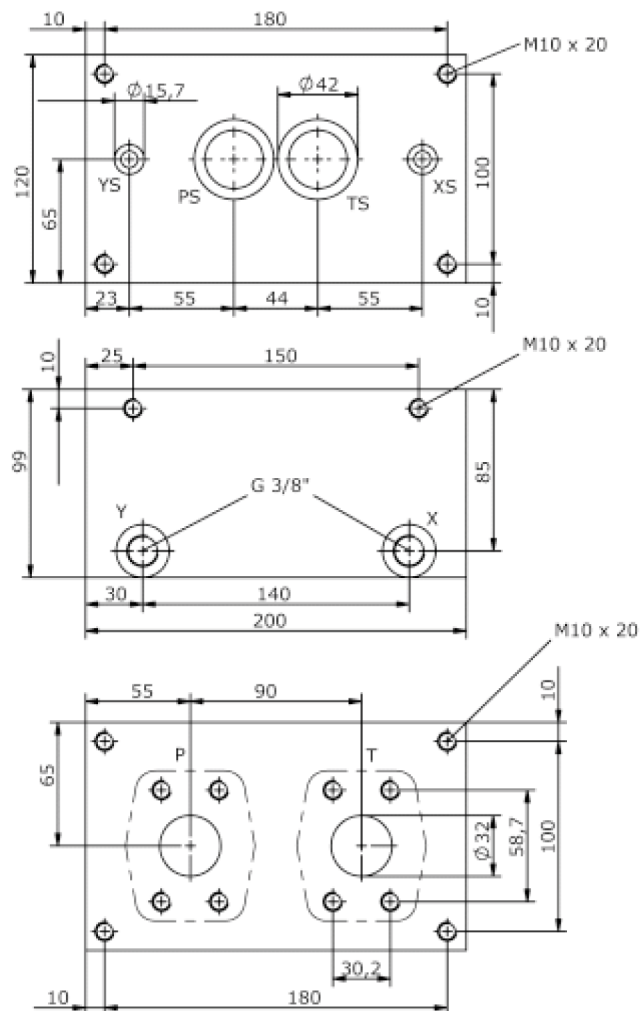
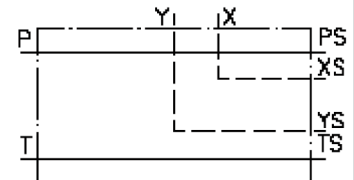


base block, stack valve, CETOP 7 (ports in SAE: P and T at bottom)

MBS-16.-B01/SAE 1 1/4-3000

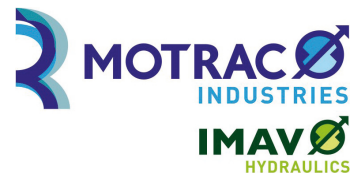
IM-605-110-00

(subject to change)



base block, stack valve, CETOP 7 (ports in SAE: P and T at bottom)

MBS-16.-B01/SAE 1 1/4-3000



Motrac Hydraulik GmbH
Siemensring 87 - D-47877 Willich
fon +49-(0)2154-8162.0 - fax +49-(0)2154-8162.499
e-mail info.miw@motracindustries.com
internet www.motracindustries.com

IM-605-110-00

(subject to change)

Ordering example:

MBS - 16A - B01 / SAE 1 1/4-3000

A **B** **C** **D**

Model code:

- | | |
|---|--|
| A design
IMAV-stack system | C base manifold
base block |
| B size and material
16A = aluminum (F37)
16S = steel (9SMnPb28K resp. GGG-40) | D port size P and T
SAE 1 1/4" 3000 PSI |

Technical Data:

- | | |
|--------------------------|--|
| nominal pressure: | 210 bar (A)
350 bar (S) |
| weight: | 6.1 / 12.5 kg (A/S) |
| included: | included
2 pcs. O-Ring 12.42 x 1.78
2 pcs. O-Ring 36.09 x 3.53 |