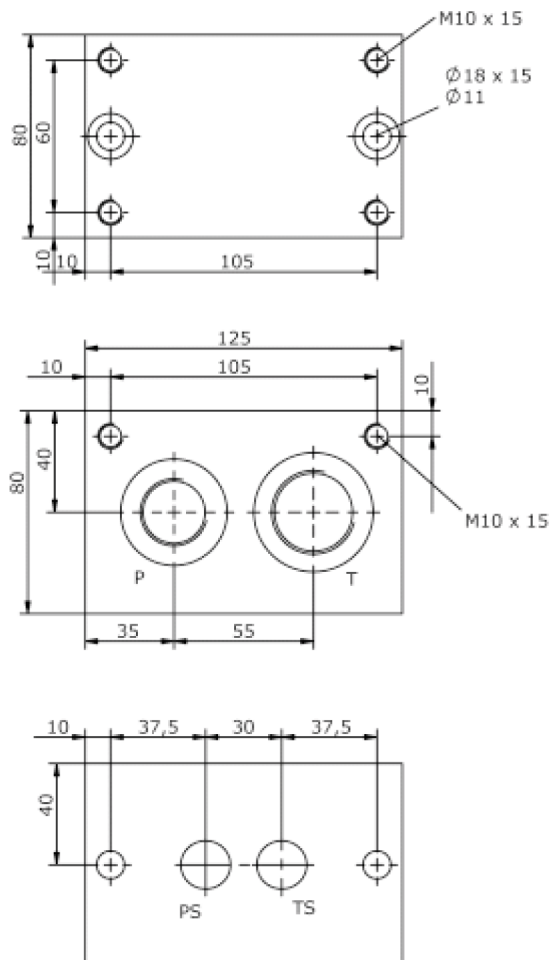
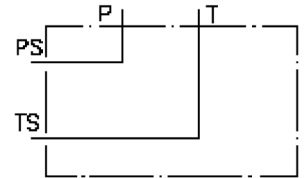


top block CETOP 5 (ports P and T at back)

MBS-10.-TE3

IM-580-130-00

(subject to change)



top block CETOP 5 (ports P and T at back)

MBS-10.-TE3



Motrac Hydraulik GmbH
Siemensring 87 - D-47877 Willich
fon +49-(0)2154-8162.0 - fax +49-(0)2154-8162.499
e-mail info.miw@motracindustries.com
internet www.motracindustries.com

IM-580-130-00

(subject to change)



Ordering example:

MBS - 10A - TE3



Model code:

- | | | | |
|----------|--|----------|---|
| A | design
IMAV-stack system | C | shut off manifold
shut off manifold |
| B | size and material
10A = aluminum (F37)
10S = steel (9SMnPb28K resp. GGG-40) | | |

Technical Data:

nominal pressure:	210 bar (A) 350 bar (S)
weight:	2.1 / 4.4 kg (A/S)
included:	included: 2 pcs. M10 x 80 DIN 912