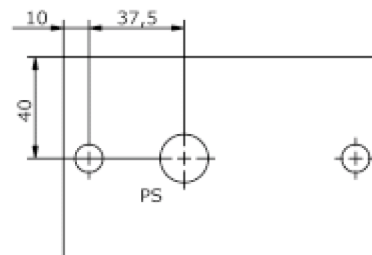
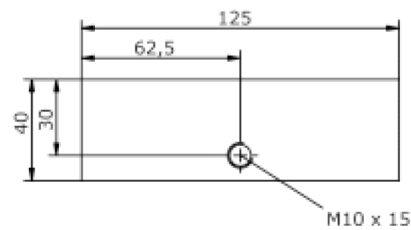
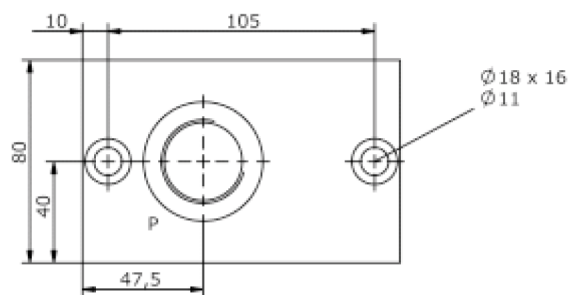
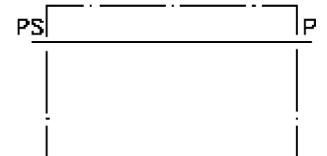


top block CETOP 5 (port P: BSPP 1" at top)

MBS-10.-TE2

IM-580-120-00

(subject to change)



top block CETOP 5
(port P: BSPP 1" at top)
MBS-10.-TE2



Motrac Hydraulik GmbH
Siemensring 87 - D-47877 Willich
fon +49-(0)2154-8162.0 - fax +49-(0)2154-8162.499
e-mail info.miw@motracindustries.com
internet www.motracindustries.com

IM-580-120-00
(subject to change)



Ordering example:

MBS - 10A - TE2
| | |
A **B** **C**

Model code:

- | | |
|---|--|
| A design
IMAV-stack system | C shut off manifold
shut off manifold |
| B size and material
10A = aluminum (F37)
10S = steel (9SMnPb28K resp. GGG-40) | |

Technical Data:

nominal pressure: 210 bar
weight: 2.1 / 4.5 kg (A/S)
included: included:
2 pcs. M10 x 40 DIN 912