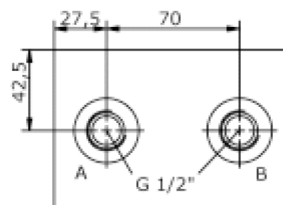
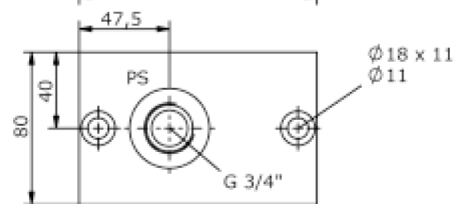
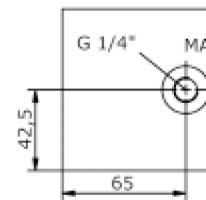
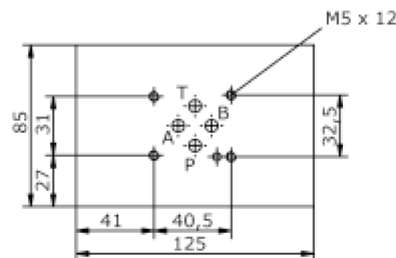
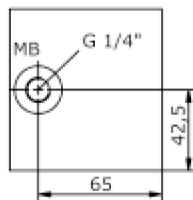
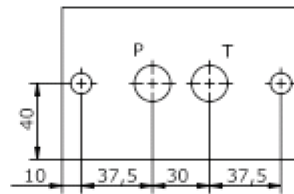
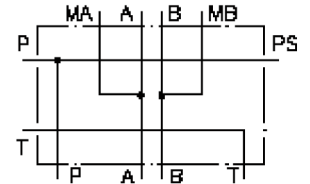


# top block CETOP 5 (ports P: BSPP 3/4", A+B: BSPP 1/2")

MBS-10.-TP-1A06

IM-580-100-00

(subject to change)



**top block CETOP 5**  
**(ports P: BSPP 3/4", A+B: BSPP 1/2")**  
MBS-10.-TP-1A06



**Ordering example:**

MBS - 10A - TP - 1A06  
|        |        |        |  
**A**    **B**    **C**    **D**

**Model code:**

- |   |   |
|---|---|
| <b>A</b> <b>design</b><br>IMAV-stack system   | <b>C</b> <b>shut off manifold with P-port</b><br>shut off manifold with P-port        |
| <b>B</b> <b>size and material</b><br>10A = aluminum (F37)<br>10S = steel (9SMnPb28K resp. GGG-40) | <b>D</b> <b>qty. of directional valves</b><br>interface for directional valve CETOP 5 |

**Technical Data:**

**nominal pressure:** 210 bar (A)  
350 bar (S)

**weight:** 2.2 / 4.6 kg (A/S)

**included:** included:  
2 pcs. M10 x 90 DIN 912