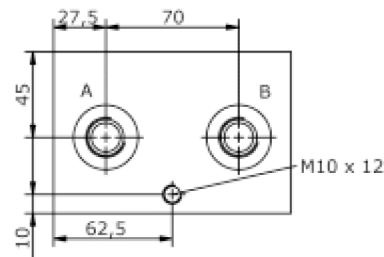
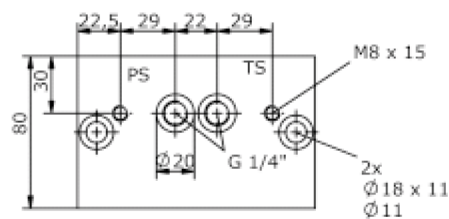
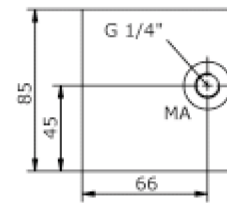
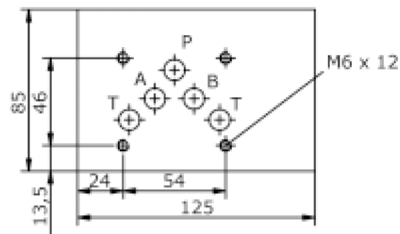
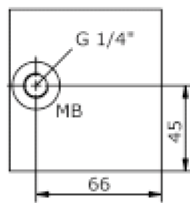
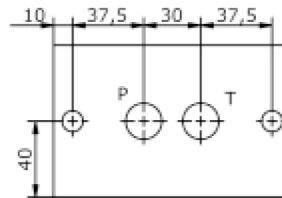
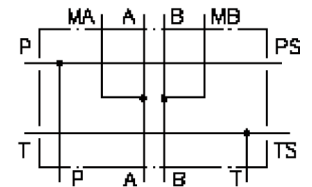


adapter block from CETOP 5 to CETOP 3 (included interface for 1 ETOP 5 valve)

MBS-10./06.-1A/B..

IM-545-250-00

(subject to change)



adapter block from CETOP 5 to CETOP 3 (included interface for 1 ETOP 5 valve)

MBS-10./06.-1A/B..



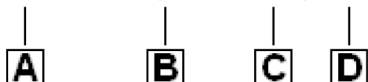
Motrac Hydraulik GmbH
Siemensring 87 - D-47877 Willich
fon +49-(0)2154-8162.0 - fax +49-(0)2154-8162.499
e-mail info.mhw@motrac-hydraulics.com
internet www.motrac-hydraulics.com

IM-545-250-00

(subject to change)

Ordering example:

MBS - 10A/06A - 1A / B06



Model code:

- | | |
|--|---|
| <p>A design
IMAV-stack system</p> <p>B size and material
reduction from CETOP 5 to CETOP 3
10A/06A = aluminum (F37)
10S/06S = steel (9SMnPb28K resp. GGG-40)</p> | <p>C qty. of directional valves
number of directional valves</p> <p>D port size A and B
B04 = BSPP 1/2"
B06 = BSPP 3/4"</p> |
|--|---|

Technical Data:

- | | |
|--------------------------|--|
| nominal pressure: | 210 bar (A)
350 bar (S) |
| weight: | 2.2 / 4.6 kg (A/S) |
| included: | included
2 pcs. O-Ring 21.82 x 3.53 |