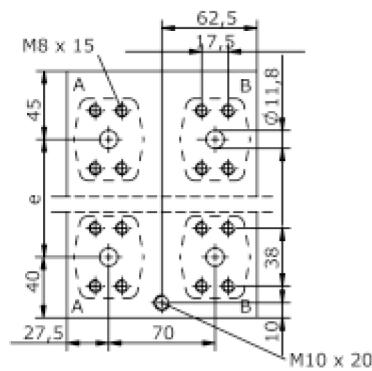
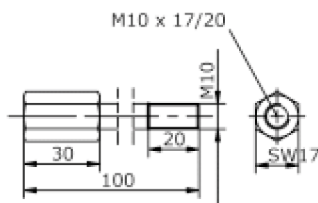
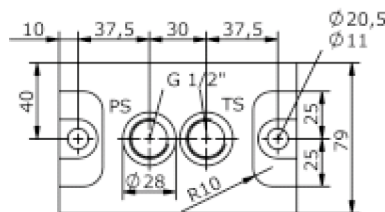
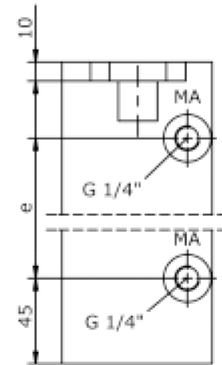
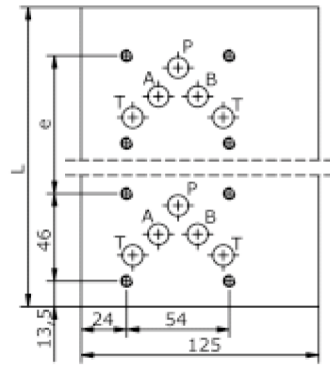
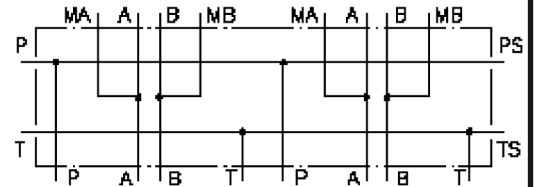


# multiple mounting block CETOP 5 ((stack screws included) with SAE)

MBS-10A-.A/SAE 1/2-3000

IM-545-200-00

(subject to change)



# multiple mounting block CETOP 5 ((stack screws included) with SAE)

MBS-10A-.A/SAE 1/2-3000



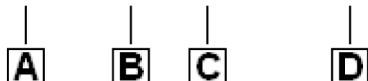
Motrac Hydraulik GmbH  
Siemensring 87 - D-47877 Willich  
fon +49-(0)2154-8162.0 - fax +49-(0)2154-8162.499  
e-mail info.mhw@motrac-hydraulics.com  
internet www.motrac-hydraulics.com

IM-545-200-00

(subject to change)

## Ordering example:

MBS - 10A - 2A / SAE 1/2-3000



## Model code:

- |  |   |
|--|---|
| <b>A</b> design<br>IMAV-stack system               | <b>C</b> qty. of directional valves<br>number of directional valves |
| <b>B</b> size and material<br>10A = aluminum (F37) | <b>D</b> port size A and B<br>SAE 1" 3000 PSI                       |

## Technical Data:

- nominal pressure:** 250 bar
- weight:**
- included:** included  
2 pcs. O-Ring 21.82 x 3.53