

base block, stack valve, CETOP 5 (with relief valve, RV5-10, with electric discharge)

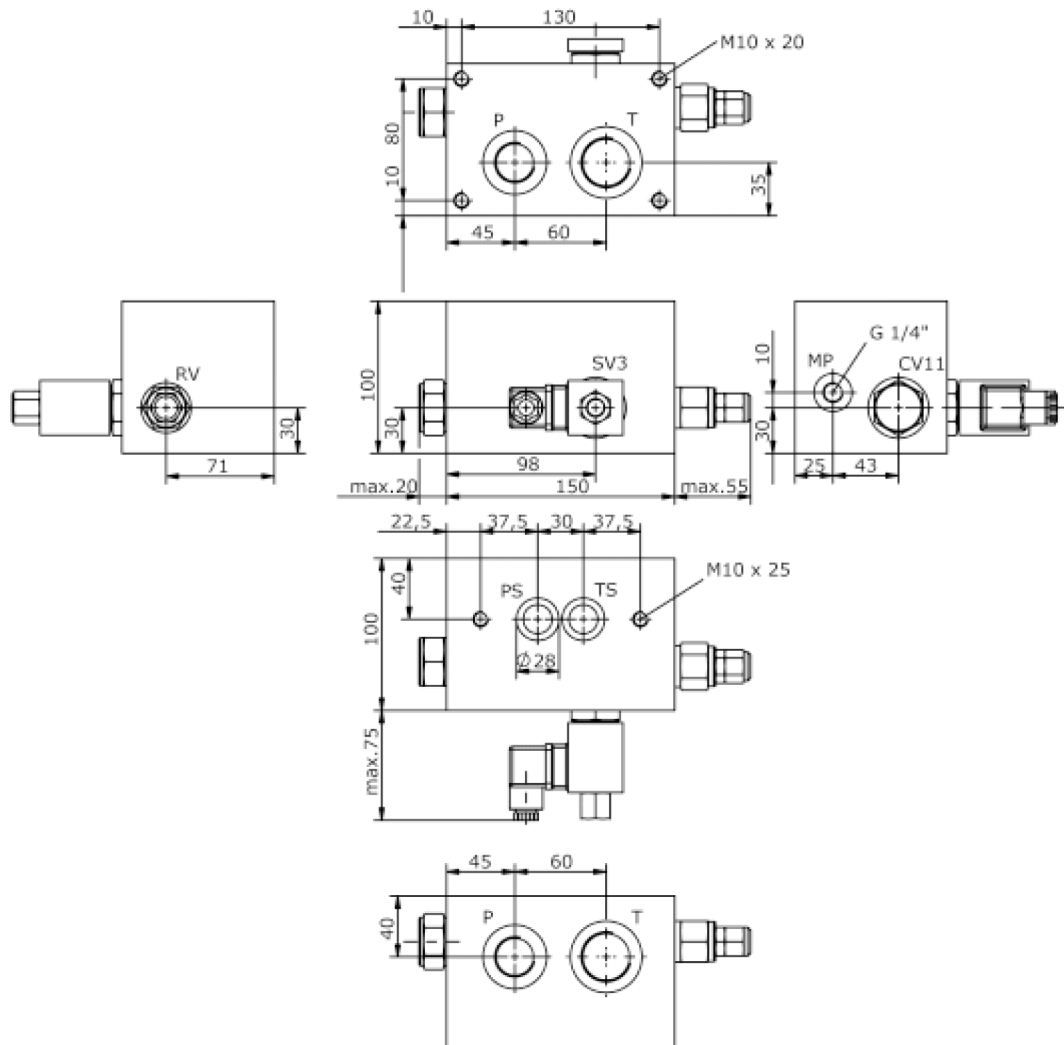
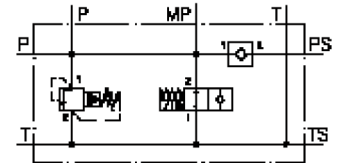
MBS-10.-B30/B06-05./...-.....



Motrac Hydraulik GmbH
Siemensring 87 - D-47877 Willich
fon +49-(0)2154-8162.0 - fax +49-(0)2154-8162.499
e-mail info.mhw@motrac-hydraulics.com
internet www.motrac-hydraulics.com

IM-512-103-00

(subject to change)



**base block, stack valve, CETOP 5
(with relief valve, RV5-10,
with electric discharge)**

MBS-10.-B30/B06-05./..-.....



Ordering example:

MBS - 10A - B30 / B06 - 05 - C / 20 - C - 024D - G

A
 B
 C
 D
 E
 F
 G
 H
 I
 J

Model code:

- | | |
|---|--|
| <p>A design IMAV-stack system</p> <p>B size and material 10A = aluminum (F37) 10S = steel (9SMnPb28K resp. GGG-40)</p> <p>C base manifold base block</p> <p>D port size P and T B06 = P: BSPP 3/4" and T: BSPP 1"</p> <p>E relief valve 05 = RV5-10.-.. (direct acting) see data sheet no.: <u>MP-170-101-00</u> PS = RVPS-10.-.. (pilot operated) see data sheet no.: <u>CP-110-101-00</u></p> <p>F adjustment J = internal (only RV5) C = cap K = handknob S = screw adjustment</p> <p>G pressure range RV5-10.-.. 03 = 3.5 - 20 bar 20 = 7.0 - 140 bar 35 = 17.0 - 240 bar RVPS-10.-.. 15 = 3.4 - 105 bar 30 = 3.4 - 210 bar 50 = 3.4 - 350 bar</p> | <p>H type: SV3-12.-.. C = normally closed C = normally closed see data sheet no.: <u>MS-240-120-00</u> 0 = normally open 0 = normally open see data sheet no.: <u>MS-440-120-00</u></p> <p>I voltage DC current: 012D = 12V DC 024D = 24V DC AC current: 120A = 120V AC 240A = 240V AC other voltage on request</p> <p>J power supply G = DIN 43650 connector, other connectors see data sheet no.: MS-010-000-00</p> |
|---|--|

Technical Data:

- nominal pressure:** 210 bar (A)
350 bar (S)
- weight:** 7.5 / 15.5 kg (A/S)
- included:** included
2 pcs. O-Ring 21.82 x 3.53
- check valve:** CV11-12.-.. see datasheet no. MC-140-121-00