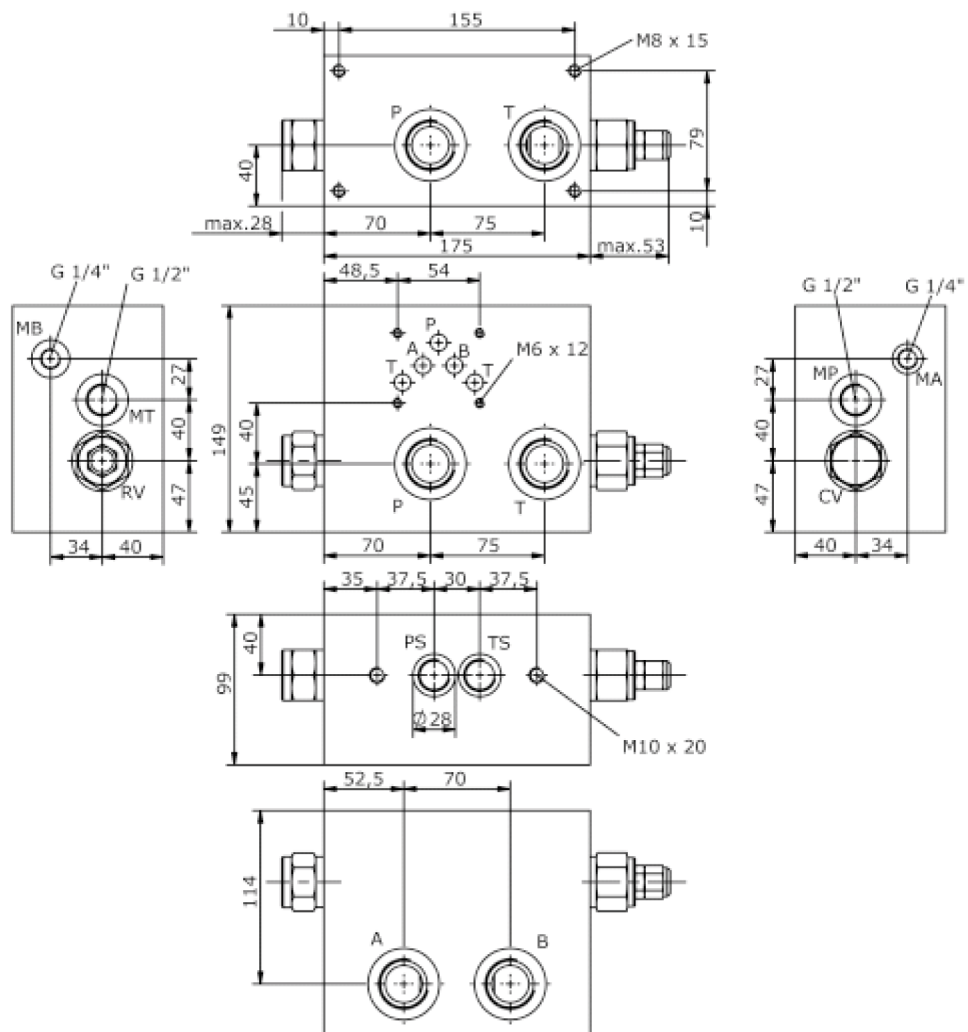
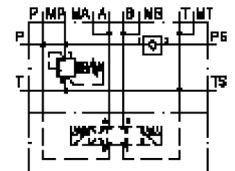


base block, stack valve, CETOP 5 (with relief valve, RVPS-12 + CETOP 5)

MBS-10.-B13/B08-PS./..

IM-510-252-00

(subject to change)



base block, stack valve, CETOP 5 (with relief valve, RVPS-12 + CETOP 5)

MBS-10.-B13/B08-PS./..



Motrac Hydraulik GmbH
Siemensring 87 - D-47877 Willich
fon +49-(0)2154-8162.0 - fax +49-(0)2154-8162.499
e-mail info.mhw@motrac-hydraulics.com
internet www.motrac-hydraulics.com

IM-510-252-00

(subject to change)

Ordering example:

MBS - 10A - B13 / B08 - PS - C / 30

A	B	C	D	E	F	G

Model code:

- | | |
|--|--|
| <p>A design
IMAV-stack system</p> <p>B size and material
10A = aluminum (F37)
10S = steel (9SMnPb28K resp. GGG-40)</p> <p>C base manifold
base block</p> <p>D port size
B06 = BSPP 3/4"
B08 = BSPP 1"</p> <p>E relief valve
PS = RVPS-12.-.. (pilot operated) see data sheet no.: <u>CP-110-121-00</u></p> | <p>F adjustment
C = cap
K = handknob
S = screw adjustment</p> <p>G pressure range
RVPS-12.-..
15 = 3.4 - 105 bar
30 = 3.4 - 210 bar
50 = 3.4 - 350 bar</p> |
|--|--|

Technical Data:

- | | |
|--------------------------|--|
| nominal pressure: | 210 bar (A)
350 bar (S) |
| weight: | 7.5 / 15.5 kg (A/S) |
| included: | included
2 pcs. O-Ring 21.82 x 3.53 |
| check valve: | CVFP-12.-.. see datasheet no. <u>CC-110-121-00</u> |