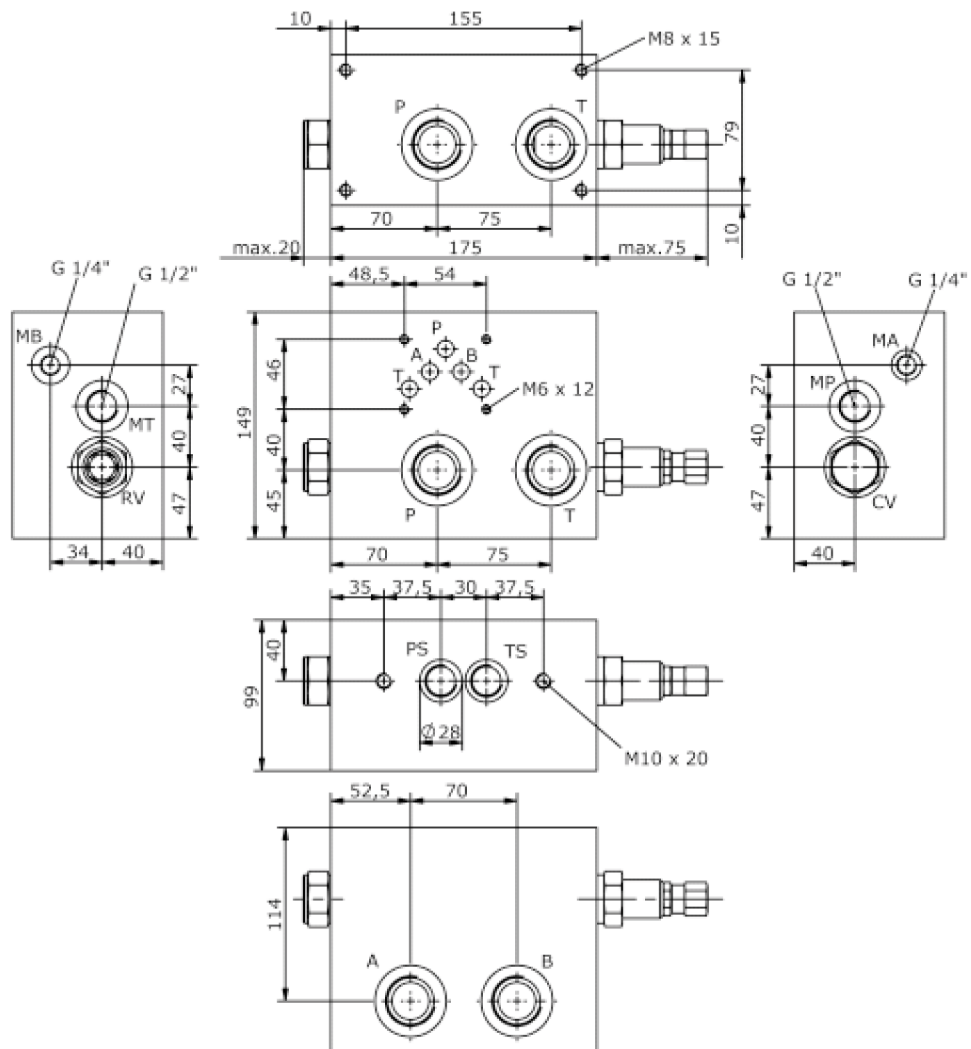
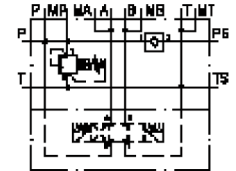


# base block, stack valve, CETOP 5 (with relief valve, RV11-12 + CETOP 5)

MBS-10.-B13/B08-11./..

IM-510-251-00

(subject to change)



# base block, stack valve, CETOP 5 (with relief valve, RV11-12 + CETOP 5)

MBS-10.-B13/B08-11./..



Motrac Hydraulik GmbH  
Siemensring 87 - D-47877 Willich  
fon +49-(0)2154-8162.0 - fax +49-(0)2154-8162.499  
e-mail info.mhw@motrac-hydraulics.com  
internet www.motrac-hydraulics.com

IM-510-251-00

(subject to change)

## Ordering example:

MBS - 10A - B13 / B08 - 11 - C / 30

A	B	C	D	E	F	G

## Model code:

- |   |   |
|---|---|
| <p><b>A design</b><br/>IMAV-stack system</p> <p><b>B size and material</b><br/>10A = aluminum (F37)<br/>10S = steel (9SMnPb28K resp. GGG-40)</p> <p><b>C base manifold</b><br/>base block</p> <p><b>D port size</b><br/>B06 = BSPP 3/4"<br/>B08 = BSPP 1"</p> <p><b>E relief valve</b><br/>11 = RV11-12.-.. (direct acting) see data sheet no.: <a href="#">MP-170-121-00</a></p> | <p><b>F adjustment</b><br/>J = internal<br/>C = cap<br/>K = handknob</p> <p><b>G pressure range</b><br/>RV11-12.-..<br/>15 = 10.0 - 100 bar<br/>30 = 17.0 - 210 bar<br/>60 = 25.0 - 350 bar</p> |
|---|---|

## Technical Data:

- nominal pressure:** 210 bar (A)  
350 bar (S)
- weight:**
- included:** included  
2 pcs. O-Ring 21.82 x 3.53
- check valve:** CV11-12.-.. see datasheet no. [MC-140-121-00](#)