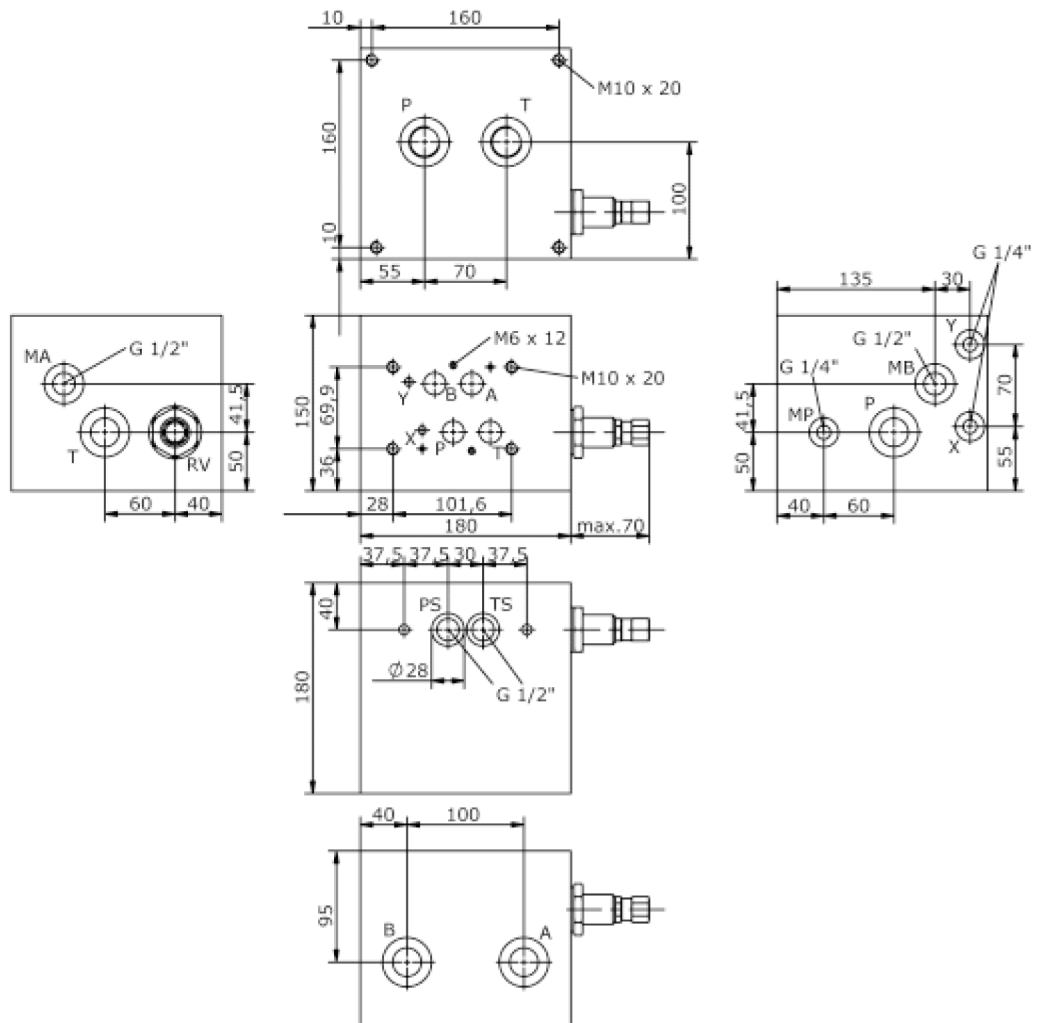
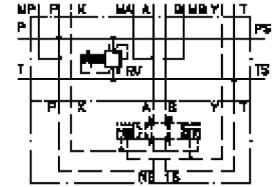


# base block, stack valve, CETOP 5 (with relief valve, RV5-16 + CETOP 7)

MBS-10.-B11/B10-05./..

IM-510-151-00

(subject to change)



# base block, stack valve, CETOP 5 (with relief valve, RV5-16 + CETOP 7)

MBS-10.-B11/B10-05./..



Motrac Hydraulik GmbH  
Siemensring 87 - D-47877 Willich  
fon +49-(0)2154-8162.0 - fax +49-(0)2154-8162.499  
e-mail info.mhw@motrac-hydraulics.com  
internet www.motrac-hydraulics.com

IM-510-151-00

(subject to change)

## Ordering example:

MBS - 10A - B11 / B10 - 05 - C / 30

**A**   **B**   **C**   **D**   **E**   **F**   **G**

## Model code:

- |  |  |
|--|--|
| <p><b>A</b> <b>design</b><br/>IMAV-stack system</p> <p><b>B</b> <b>size and material</b><br/>10A = aluminum (F37)</p> <p><b>C</b> <b>base manifold</b><br/>base block</p> <p><b>D</b> <b>port size P, T, A and B</b><br/>B06 = P, A, B: BSPP 3/4" and T: BSPP 1"<br/>B08 = P, A, B: BSPP 1" and T: BSPP 1 1/4"<br/>B10 = P, A, B: BSPP 1 1/4" and T: BSPP 1 1/2"</p> | <p><b>E</b> <b>relief valve</b><br/>05 = RV5-16.-.. (pilot operated) see data sheet no.: <u>MP-170-161-00</u></p> <p><b>F</b> <b>adjustment</b><br/>C = cap</p> <p><b>G</b> <b>pressure range</b><br/>RV5-16.-..<br/>30 = 35.0 - 210 bar<br/>60 = 70.0 - 415 bar</p> |
|--|--|

## Technical Data:

**nominal pressure:** 250 bar  
**weight:** 13.9 kg  
**included:** included  
2 pcs. O-Ring 21.82 x 3.53