

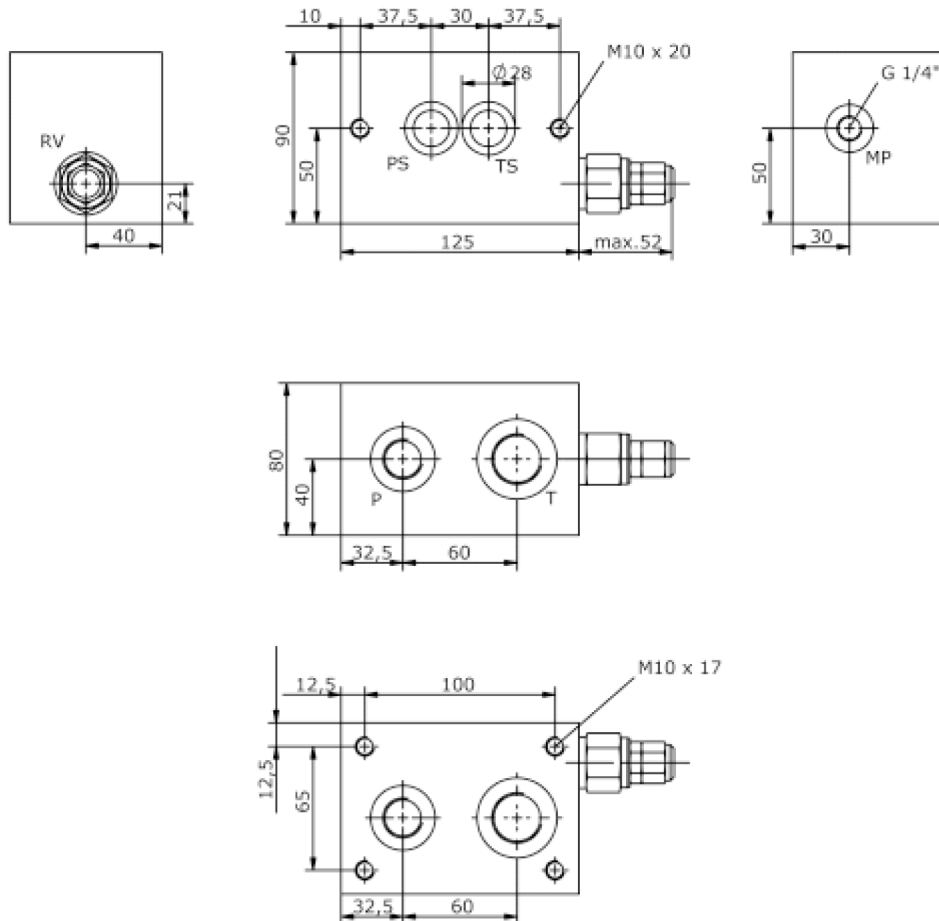
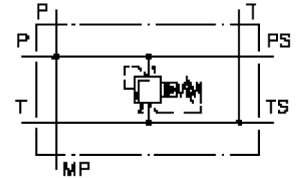
base block, stack valve, CETOP 5 (with relief valve, pilot operated, RVPS-10) MBS-10.-B10/B04-PS./..



Motrac Hydraulik GmbH
Siemensring 87 - D-47877 Willich
fon +49-(0)2154-8162.0 - fax +49-(0)2154-8162.499
e-mail info.mhw@motrac-hydraulics.com
internet www.motrac-hydraulics.com

IM-510-102-00

(subject to change)



base block, stack valve, CETOP 5 (with relief valve, pilot operated, RVPS-10)

MBS-10.-B10/B04-PS./..



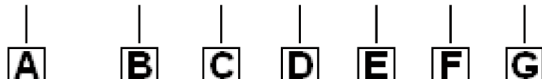
Motrac Hydraulik GmbH
Siemensring 87 - D-47877 Willich
fon +49-(0)2154-8162.0 - fax +49-(0)2154-8162.499
e-mail info.mhw@motrac-hydraulics.com
internet www.motrac-hydraulics.com

IM-510-102-00

(subject to change)

Ordering example:

MBS - 10A - B10 / B04 - PS - C / 15



Model code:

- | | |
|--|--|
| <p>A design IMAV-stack system</p> <p>B size and material 10A = aluminum (F37) 10S = steel (9SMnPb28K resp. GGG-40)</p> <p>C base manifold base block</p> <p>D port size P and T B04 = P: BSPP 1/2" and T: BSPP 3/4" B06 = P: BSPP 3/4" and T: BSPP 1"</p> <p>E relief valve PS = RVPS-10.-.. (pilot operated) see data sheet no.: CP-110-101-00</p> | <p>F adjustment C = cap K = handknob S = screw adjustment</p> <p>G pressure range RVPS-10.-.. 15 = 3.4 - 105 bar 30 = 3.4 - 210 bar 50 = 3.4 - 350 bar</p> |
|--|--|

Technical Data:

| | |
|--------------------------|--|
| nominal pressure: | 210 bar (A) 350 bar (S) |
| weight: | 2.5 / 5.2 kg (A/S) |
| included: | included 2 pcs. O-Ring 21.82 x 3.53 |