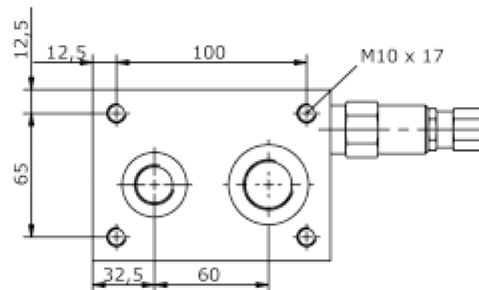
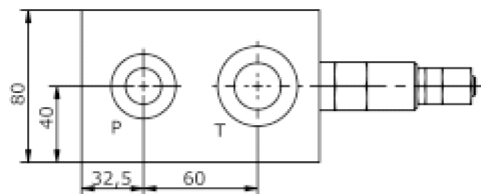
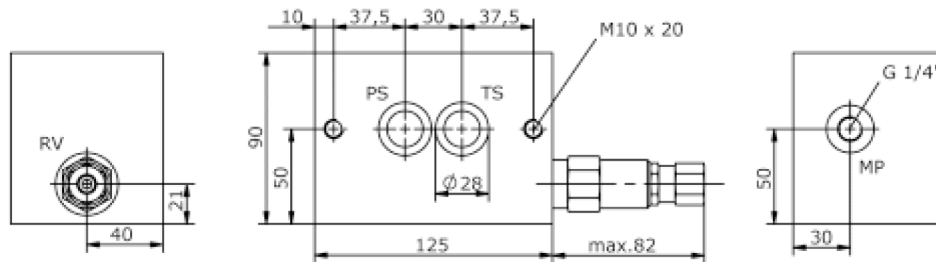
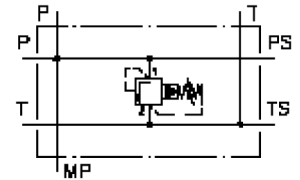


base block, stack valve, CETOP 5 (with relief valve, pilot operated, RV5-10) MBS-10.-B10/B04-05./..

IM-510-101-00

(subject to change)



base block, stack valve, CETOP 5 (with relief valve, pilot operated, RV5-10)

MBS-10.-B10/B04-05./..



Motrac Hydraulik GmbH
Siemensring 87 - D-47877 Willich
fon +49-(0)2154-8162.0 - fax +49-(0)2154-8162.499
e-mail info.mhw@motrac-hydraulics.com
internet www.motrac-hydraulics.com

IM-510-101-00

(subject to change)

Ordering example:

MBS - 10A - B10 / B04 - 05 - C / 20

A **B** **C** **D** **E** **F** **G**

Model code:

- | | | | |
|----------|---|----------|-------------------------------------|
| A | design
IMAV-stack system | G | pressure range
RV5-10.-.. |
| B | size and material
10A = aluminum (F37) | | 03 = 3.5 - 20 bar |
| C | base manifold
base block | | 20 = 7.0 - 140 bar |
| D | port size P and T
B04 = P: BSPP 1/2" and T: BSPP 3/4"
B06 = P: BSPP 3/4" and T: BSPP 1" | | 35 = 17.0 - 240 bar |
| E | relief valve
05 = RV5-10.-.. (direct acting) see data
sheet no.: MP-170-101-00 | | |
| F | adjustment
J = internal
C = cap
K = handknob | | |

Technical Data:

nominal pressure: 250 bar
weight: 2.5 kg
included: included
2 pcs. O-Ring 21.82 x 3.53