

base block, stack valve, CETOP 5 (ports in SAE at rear)

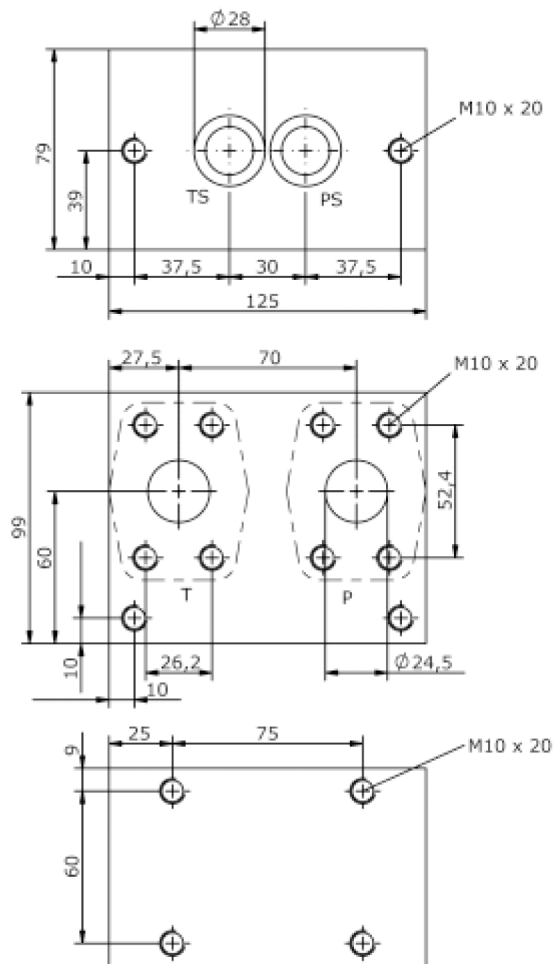
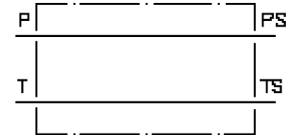
MBS-10.-B03/SAE 1-3000



Motrac Hydraulik GmbH
Siemensring 87 - D-47877 Willich
fon +49-(0)2154-8162.0 - fax +49-(0)2154-8162.499
e-mail info.mhw@motrac-hydraulics.com
internet www.motrac-hydraulics.com

IM-505-210-00

(subject to change)



base block, stack valve, CETOP 5 (ports in SAE at rear)

MBS-10.-B03/SAE 1-3000



Motrac Hydraulik GmbH
Siemensring 87 - D-47877 Willich
fon +49-(0)2154-8162.0 - fax +49-(0)2154-8162.499
e-mail info.mhw@motrac-hydraulics.com
internet www.motrac-hydraulics.com

IM-505-210-00

(subject to change)

Ordering example:

MBS - 10A - B03 / SAE 1-3000



Model code:

- | | |
|--|---|
| A design
IMAV-stack system | C base manifold
base block |
| B size and material
10A = aluminum (F37)
10S = steel (9SMnPb28K resp. GGG-40) | D port size P and T
SAE 1" 3000 PSI |

Technical Data:

nominal pressure:	210 bar (A) 350 bar (S)
weight:	2.5 / 5.3 kg (A/S)
included:	included 2 pcs. O-Ring 21.82 x 3.53