

# base block, stack valve, CETOP 5 (ports in SAE at bottom)

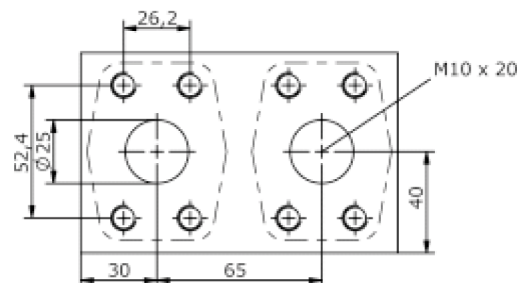
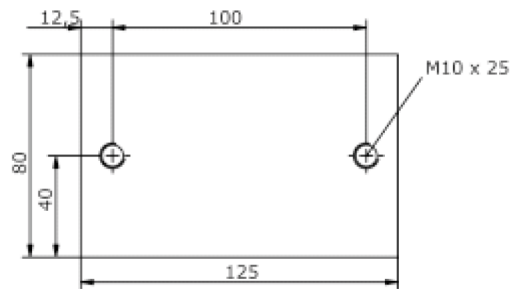
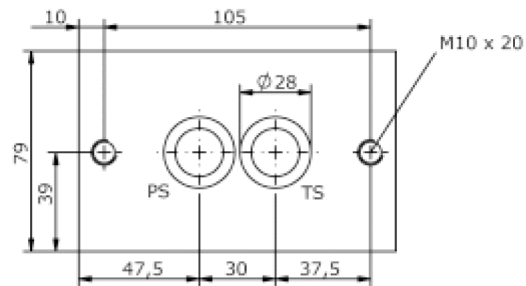
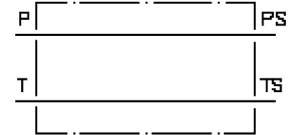
MBS-10.-B01/SAE 1-3000



Motrac Hydraulik GmbH  
Siemensring 87 - D-47877 Willich  
fon +49-(0)2154-8162.0 - fax +49-(0)2154-8162.499  
e-mail info.mhw@motrac-hydraulics.com  
internet www.motrac-hydraulics.com

IM-505-110-00

(subject to change)



# base block, stack valve, CETOP 5 (ports in SAE at bottom)

MBS-10.-B01/SAE 1-3000



Motrac Hydraulik GmbH  
Siemensring 87 - D-47877 Willich  
fon +49-(0)2154-8162.0 - fax +49-(0)2154-8162.499  
e-mail info.mhw@motrac-hydraulics.com  
internet www.motrac-hydraulics.com

**IM-505-110-00**

(subject to change)

## Ordering example:

MBS - 10A - B01 / SAE 1-3000



## Model code:

- |   |  |
|---|--|
| <b>A</b> <b>design</b><br>IMAV-stack system   | <b>C</b> <b>base manifold</b><br>base block          |
| <b>B</b> <b>size and material</b><br>10A = aluminum (F37)<br>10S = steel (9SMnPb28K resp. GGG-40) | <b>D</b> <b>port size P and T</b><br>SAE 1" 3000 PSI |

## Technical Data:

- |                          |  |
|--------------------------|--|
| <b>nominal pressure:</b> | 210 bar (A)<br>350 bar (S)             |
| <b>weight:</b>           | 2.2 / 4.3 kg (A/S)                     |
| <b>included:</b>         | included<br>2 pcs. O-Ring 21.82 x 3.53 |