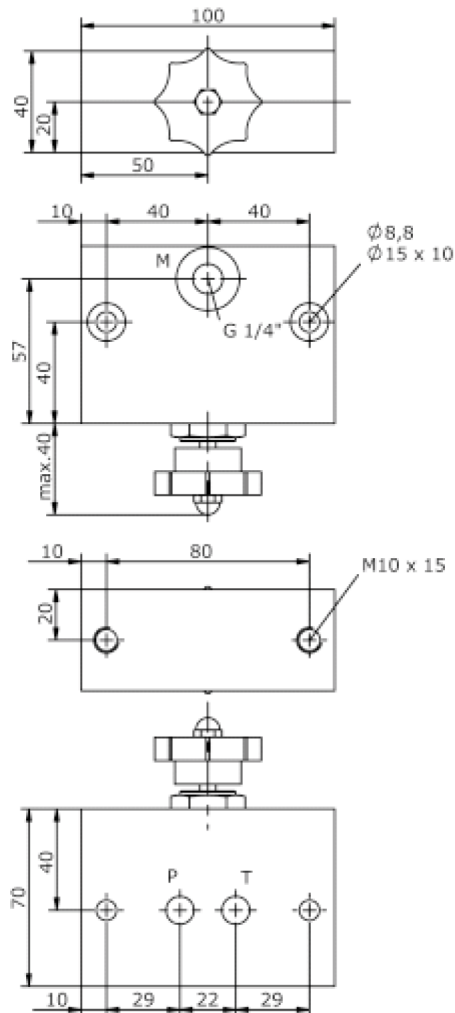
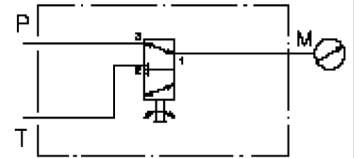


# top block CETOP 3 (with integrated gauge valve) MBS-06.-TMV

**IM-485-201-00**

(subject to change)



# top block CETOP 3 (with integrated gauge valve))

MBS-06.-TMV



Motrac Hydraulik GmbH  
Siemensring 87 - D-47877 Willich  
fon +49-(0)2154-8162.0 - fax +49-(0)2154-8162.499  
e-mail info.mhw@motrac-hydraulics.com  
internet www.motrac-hydraulics.com

**IM-485-201-00**

(subject to change)

## Ordering example:

MBS - 06A - TMV



## Model code:

- |  |  |
|--|--|
| <p><b>A</b> <b>design</b><br/>IMAV-stack system</p> <p><b>B</b> <b>size and material</b><br/>06A = aluminum (F37)<br/>06S = steel (9SMnPb28K resp. GGG-40)</p> | <p><b>C</b> <b>shut off manifold with gauge valve</b><br/>shut off manifold with gauge valve</p> |
|--|--|

## Technical Data:

- |                             |  |
|-----------------------------|--|
| <b>nominal pressure:</b>    | 210 bar (A)<br>350 bar (S)                                   |
| <b>weight:</b>              | 0.84 / 1.95 kg (A/S)   |
| <b>included:</b>            | included:<br>2 pcs. M8 x 50 DIN 912                          |
| <b>manual rotary valve:</b> | MRV3-10.-K-0 see datasheet no. <a href="#">MD-210-100-00</a> |