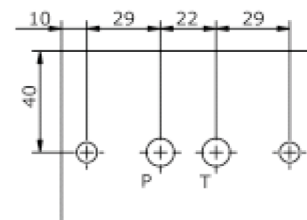
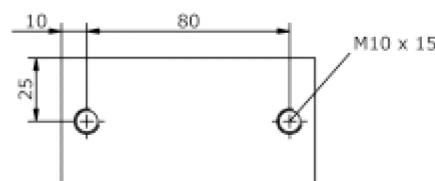
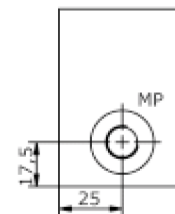
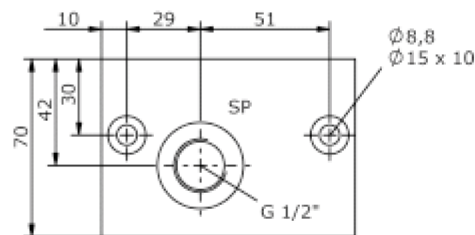
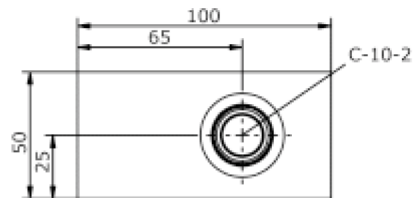
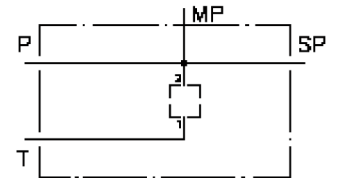


# top block CETOP 3 (with BSPP 1/2" port; C-10-2 from P to T)

MBS-06.-TS/B04

IM-485-153-00

(subject to change)



**top block CETOP 3**  
**(with BSPP 1/2" port; C-10-2 from P to T)**  
MBS-06.-TS/B04



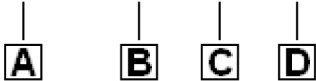
Motrac Hydraulik GmbH  
Siemensring 87 - D-47877 Willich  
fon +49-(0)2154-8162.0 - fax +49-(0)2154-8162.499  
e-mail info.mhw@motrac-hydraulics.com  
internet www.motrac-hydraulics.com

**IM-485-153-00**

(subject to change)

**Ordering example:**

MBS - 06A - TS / B04



**Model code:**

- |   |  |
|---|--|
| <b>A</b> <b>design</b><br>IMAV-stack system   | <b>C</b> <b>shut off manifold</b><br>shut off manifold |
| <b>B</b> <b>size and material</b><br>06A = aluminum (F37)<br>06S = steel (9SMnPb28K resp. GGG-40) | <b>D</b> <b>port size SP</b><br>B04 = BSPP 1/2"        |

**Technical Data:**

- note:** The MBS-block MBS-06A-TS/B.. is equipped with one cavity C-10-2 which is for a 2-way screw-in valve.
- nominal pressure:** 210 bar (A)  
350 bar (S)
- weight:** 0.84 / 1.95 kg (A/S)
- included:** included:  
2 pcs. M8 x 50 DIN 912