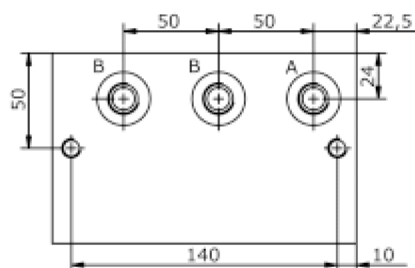
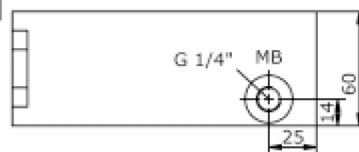
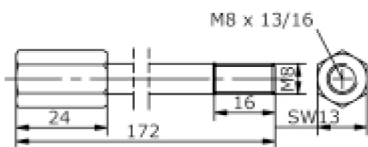
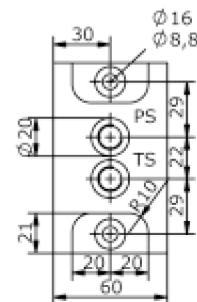
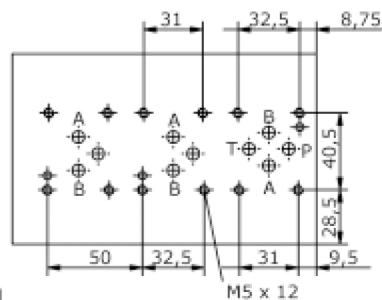
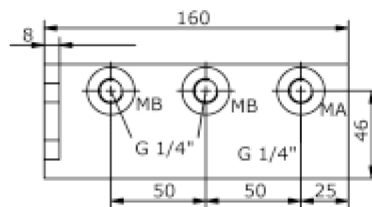
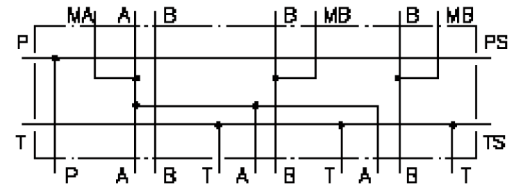


tripple mounting block CETOP 3 (for 2 3-way flow regulator CETOP 3 in B)

MBS-06.-1A2SVB/B03-T

IM-465-150-00

(subject to change)



triple mounting block CETOP 3 (for 2 3-way flow regulator CETOP 3 in B)

MBS-06.-1A2SVB/B03-T



Motrac Hydraulik GmbH
Siemensring 87 - D-47877 Willich
fon +49-(0)2154-8162.0 - fax +49-(0)2154-8162.499
e-mail info.mhw@motrac-hydraulics.com
internet www.motrac-hydraulics.com

IM-465-150-00

(subject to change)

Ordering example:

MBS - 06A - 1A - 2SV - B / B03 - T

A	B	C	D	E	F	G

Model code:

- | | |
|---|---|
| <p>A design
IMAV-stack system</p> <p>B size and material
06A = aluminum (F37)
06S = steel (9SMnPb28K resp. GGG-40)</p> <p>C qty. of directional valves
number of directional valves</p> | <p>D mounting type
for 2 flow regulator valves CETOP 5</p> <p>E flow regulation
B = in B</p> <p>F port size A and B
B03 = BSPP 1/2"</p> <p>G with drilled T-port
for 3-way flow regulator valve</p> |
|---|---|

Technical Data:

- nominal pressure:** 210 bar (A)
350 bar (S)
- weight:** 2.3 / 4.8 kg (A/S)
- included:** included
2 pcs. O-Ring 15.10 x 2.70
2 pcs. stack screws