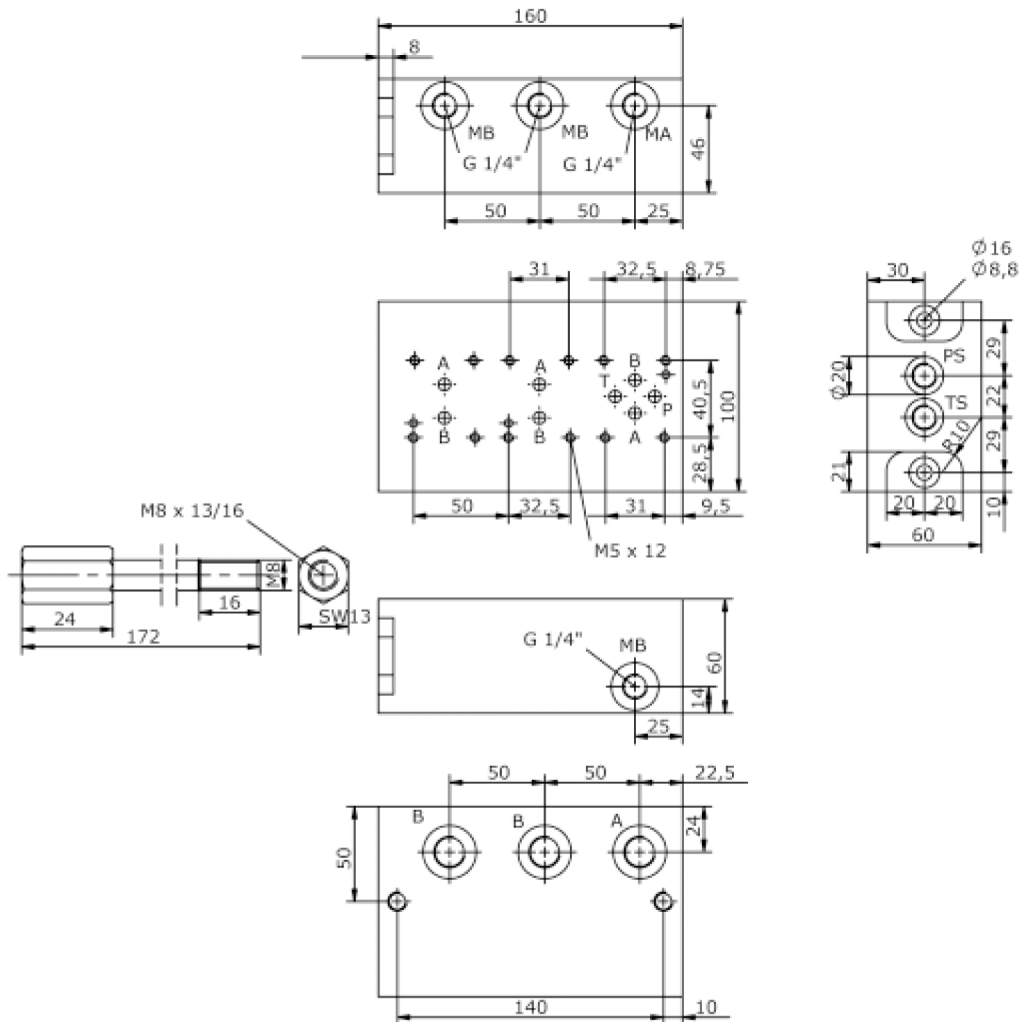
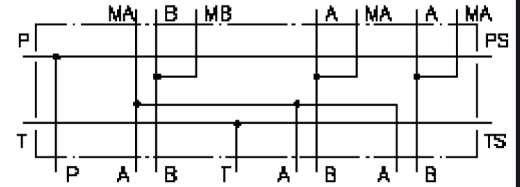


# triple mounting block CETOP 3 (for 2 2-way flow regulator CETOP 3 in A)

MBS-06.-1A2SVA/B..

IM-465-099-00

(subject to change)



# tripple mounting block CETOP 3 (for 2 2-way flow regulator CETOP 3 in A)

MBS-06.-1A2SVA/B..



Motrac Hydraulik GmbH  
Siemensring 87 - D-47877 Willich  
fon +49-(0)2154-8162.0 - fax +49-(0)2154-8162.499  
e-mail info.mhw@motrac-hydraulics.com  
internet www.motrac-hydraulics.com

**IM-465-099-00**

(subject to change)

## Ordering example:

MBS - 06A - 1A - 2SV - A / B03  
|     |     |     |     |     |  
**A**   **B**   **C**   **D**   **E**   **F**

## Model code:

- |   |  |
|---|--|
| <b>A</b> <b>design</b><br>IMAV-stack system   | <b>D</b> <b>mounting type</b><br>for 2 flow regulator valves CETOP 5 |
| <b>B</b> <b>size and material</b><br>06A = aluminum (F37)<br>06S = steel (9SMnPb28K resp. GGG-40) | <b>E</b> <b>flow regulation</b><br>A = in A                          |
| <b>C</b> <b>qty. of directional valves</b><br>number of directional valves                        | <b>F</b> <b>port size A and B</b><br>B03 = BSPP 1/2"                 |

## Technical Data:

**nominal pressure:** 210 bar (A)  
350 bar (S)

**weight:** 2.3 / 4.9 kg (A/S)

**included:** included  
2 pcs. O-Ring 15.10 x 2.70  
2 pcs. stack screws