

base block, stack valve, CETOP 3 (accumulator-loading-circuit)

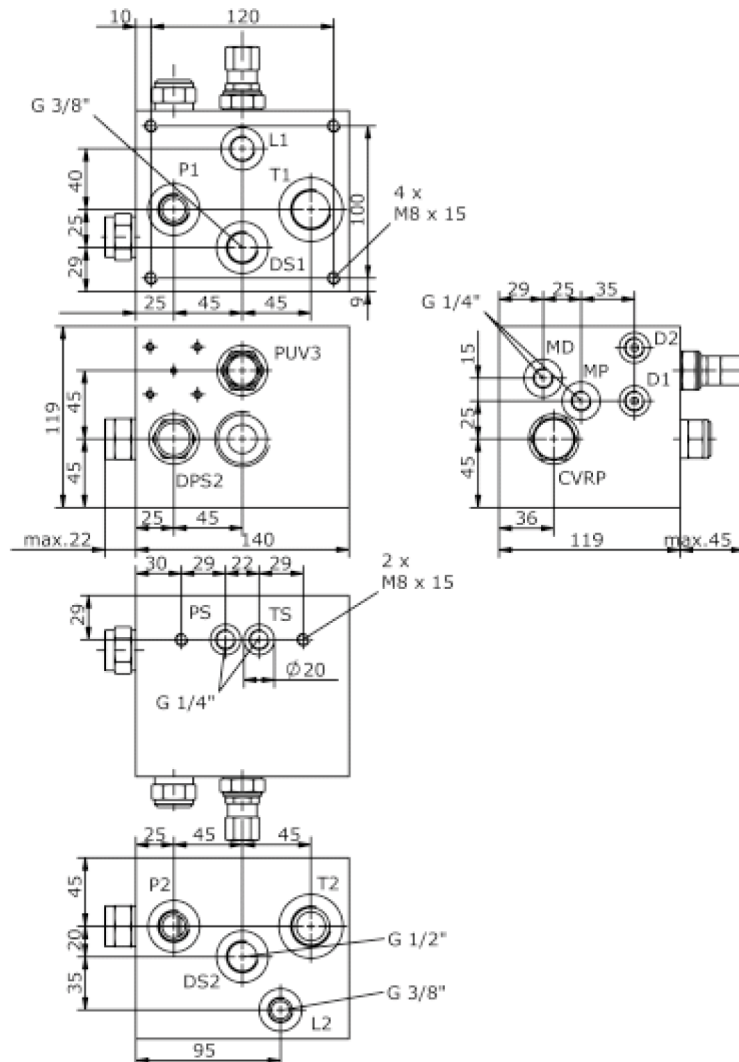
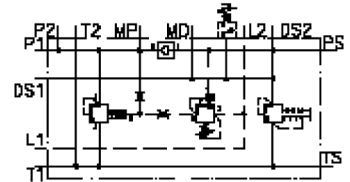
MBS-06.-B80/B..-03./...-



Motrac Hydraulik GmbH
Siemensring 87 - D-47877 Willich
fon +49-(0)2154-8162.0 - fax +49-(0)2154-8162.499
e-mail info.mhw@motrac-hydraulics.com
internet www.motrac-hydraulics.com

IM-425-103-00

(subject to change)



base block, stack valve, CETOP 3 (accumulator-loading-circuit)

MBS-06.-B80/B..-03./...-



Motrac Hydraulik GmbH
Siemensring 87 - D-47877 Willich
fon +49-(0)2154-8162.0 - fax +49-(0)2154-8162.499
e-mail info.mhw@motrac-hydraulics.com
internet www.motrac-hydraulics.com

IM-425-103-00

(subject to change)

Ordering example:

MBS - 06A - B80 / B06 - 03 - C / 75 - 30

A	B	C	D	E	F	G	H

Model code:

- | | |
|---|--|
| <p>A design
IMAV-stack system</p> <p>B size and material
06A = aluminum (F37)</p> <p>C base manifold
base block</p> <p>D port size P and T
B04 = P: BSPP 1/2" and T: BSPP 3/4"</p> <p>E pilot unloading valve
03 = PUV3-10.-..
see data sheet no.: MP-810-100-00</p> <p>F adjustment
C = cap
S = screw adjustment</p> | <p>G hysteresis (switching pressure difference)
75 = 75%
80 = 80%
85 = 85%
90 = 90%</p> <p>H pressure range
PUV3-10.-..
15 = 20.0 - 100 bar
30 = 100.0 - 210 bar</p> |
|---|--|

Technical Data:

nominal pressure:	210 bar
nominal flow:	57 l/min
weight:	3.3 kg
logic element valve:	DPS2-10.-P-.. see datasheet no. MD-750-101-00
check valve:	CVRP-10.-.. see datasheet no. CC-160-101-00
included:	included 2 pcs. O-Ring 15.10 x 2.70