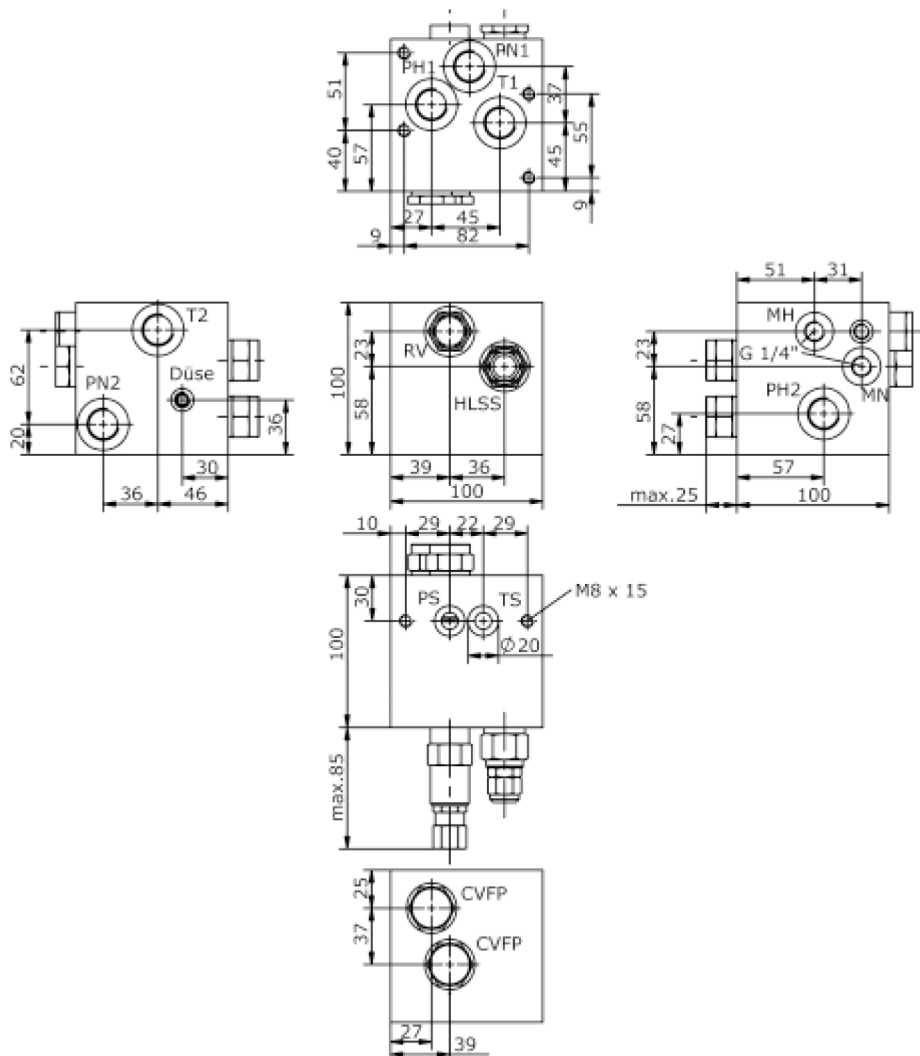
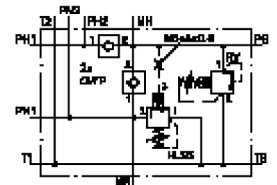


base block, stack valve, CETOP 3 (high-low pressure circuit)

MBS-06.-B70/B..-PSC/.....

IM-422-103-00

(subject to change)



base block, stack valve, CETOP 3 (high-low pressure circuit)

MBS-06.-B70/B.-PSC/.....



Motrac Hydraulik GmbH
Siemensring 87 - D-47877 Willich
fon +49-(0)2154-8162.0 - fax +49-(0)2154-8162.499
e-mail info.mhw@motrac-hydraulics.com
internet www.motrac-hydraulics.com

IM-422-103-00

(subject to change)

Ordering example:

MBS - 06A - B70 / B04 - PS - C / 15 - C / 12

A **B** **C** **D** **E** **F** **G** **H** **I**

Model code:

- | | |
|---|---|
| <p>A design
IMAV-stack system</p> <p>B size and material
06A = aluminum (F37)
06S = steel (9SMnPb28K resp. GGG-40)</p> <p>C base manifold
base block</p> <p>D port size P and T
B04 = BSPP 1/2"</p> <p>E relief valve
01 = RV1-10.-.. (direct acting) see data sheet no.: MP-100-100-00
05 = RV5-10.-.. (direct acting) see data sheet no.: MP-170-101-00
PS = RVPS-10.-.. (pilot operated) see data sheet no.: CP-110-101-00</p> <p>F adjustment DBV
C = cap
S = screw adjustment</p> <p>G pressure range
RV1-10.-..
03 = 3.5 - 20 bar
09 = 7.0 - 62 bar
18 = 17.0 - 124 bar
36 = 34.0 - 250 bar
RV5-10.-..
03 = 3.5 - 20 bar
20 = 7.0 - 140 bar
35 = 17.0 - 240 bar
RVPS-10.-..
15 = 3.4 - 105 bar
30 = 3.4 - 210 bar
50 = 3.4 - 350 bar</p> | <p>H adjustment HLSS
C = cap
S = screw adjustment</p> <p>I pressure range
HLSV-10.-..
12 = 17.2 - 83 bar
20 = 55.2 - 140 bar
40 = 151.7 - 276 bar</p> |
|---|---|

Technical Data:

nominal pressure:	210 bar (A) 350 bar (S)
nominal flow:	68 l/min
weight:	3.3 / 6.2 kg (A/S)
high low sequence valve:	high low sequence valve HLSS-10.-.. see datasheet no. CP-340-101-00
check valve:	CVFP-10.-0-.. see datasheet no. CC-110-101-00
included:	included 2 pcs. O-Ring 15.10 x 2.70