

base block, stack valve, CETOP 3 (with relief valve and 3 way proportional flow regulator)

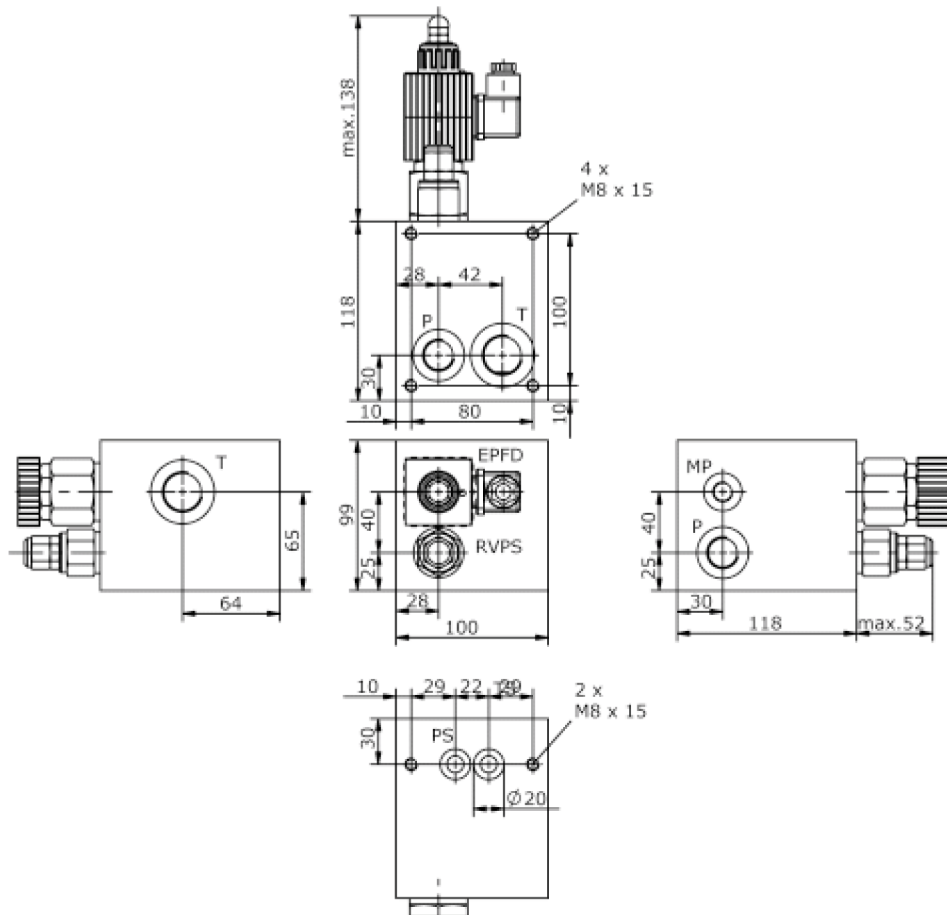
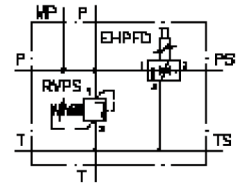
MBS-06.-B61/B..-SC/.....



Motrac Hydraulik GmbH
Siemensring 87 - D-47877 Willich
fon +49-(0)2154-8162.0 - fax +49-(0)2154-8162.499
e-mail info.mhw@motrac-hydraulics.com
internet www.motrac-hydraulics.com

IM-420-152-00

(subject to change)



base block, stack valve, CETOP 3 (with relief valve and 3 way proportional flow regulator)

MBS-06.-B61/B..-SC/.....



Motrac Hydraulik GmbH
Siemensring 87 - D-47877 Willich
fon +49-(0)2154-8162.0 - fax +49-(0)2154-8162.499
e-mail info.mhw@motrac-hydraulics.com
internet www.motrac-hydraulics.com

IM-420-152-00

(subject to change)

Ordering example:

MBS - 06A - B61 / B04 - S C / 30 - 15 / 024D G

A **B** **C** **D** **E** **F** **G** **H** **I** **J**

Model code:

- | | |
|--|--|
| <p>A design
IMAV-stack system</p> <p>B size and material
06A = aluminum (F37)
06S = steel (9SMnPb28K resp. GGG-40)</p> <p>C base manifold
base block</p> <p>D port size P and T
B04 = P: BSPP 1/2" and T: BSPP 3/4"</p> <p>E relief valve
PS = RVPS-10.-.. (pilot operated) see data sheet no.: CP-110-101-00</p> <p>F adjustment
C = cap</p> <p>G pressure range
RVPS-10.-..
15 = 3.4 - 105 bar
30 = 3.4 - 210 bar
50 = 3.4 - 350 bar</p> | <p>H 3-way proportional flow regulator valve
EPFD-16.-..
see data sheet no.: CF-920-161-00
regulated flow
05 = 0 - 19 l/min
10 = 0 - 38 l/min
15 = 0 - 57 l/min
20 = 0 - 76 l/min</p> <p>I voltage
012D = 12V DC
024D = 24V DC</p> <p>J power supply
G = DIN 43650 connector, other connectors see data sheet no.: CS-010-000-00</p> |
|--|--|

Technical Data:

- nominal pressure:** 210 bar (A)
350 bar (S)
- weight:** 3.4 / 7.1 kg (A/S)
- included:** included
2 pcs. O-Ring 15.10 x 2.70