

base block, stack valve, CETOP 3 (with adjustable flow regulator type PCFC)

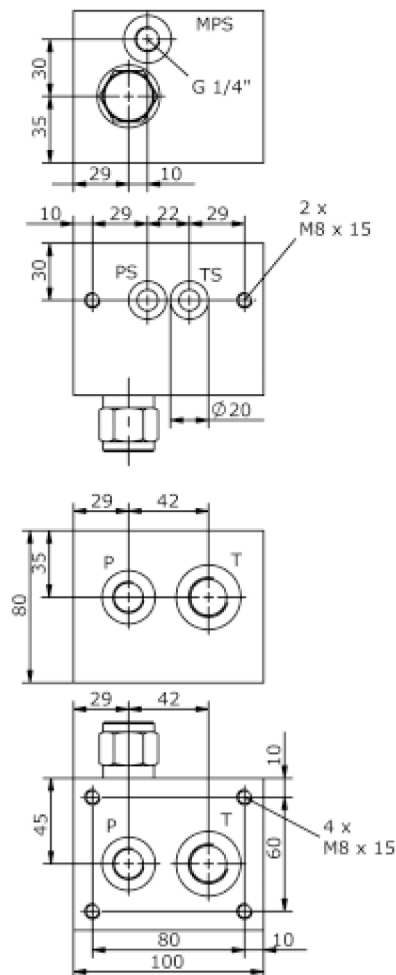
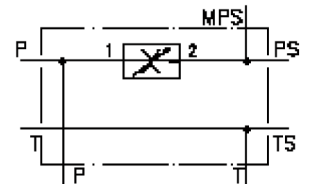
MBS-06.-B60/B..-FCC/.....



Motrac Hydraulik GmbH
Siemensring 87 - D-47877 Willich
fon +49-(0)2154-8162.0 - fax +49-(0)2154-8162.499
e-mail info.mhw@motrac-hydraulics.com
internet www.motrac-hydraulics.com

IM-420-103-00

(subject to change)



base block, stack valve, CETOP 3 (with adjustable flow regulator type PCFC)

MBS-06.-B60/B..-FCC/.....



Motrac Hydraulik GmbH
Siemensring 87 - D-47877 Willich
fon +49-(0)2154-8162.0 - fax +49-(0)2154-8162.499
e-mail info.mhw@motrac-hydraulics.com
internet www.motrac-hydraulics.com

IM-420-103-00

(subject to change)

Ordering example:

MBS - 06A - B60 / B04 - FC - C / 05.00



Model code:

- | | |
|---|---|
| <p>A design
IMAV-stack system</p> <p>B size and material
06A = aluminum (F37)
06S = steel (9SMnPb28K resp. GGG-40)</p> <p>C base manifold
base block</p> <p>D port size P and T
B03 = P: BSPP 3/8" and T: BSPP 1/2"
B04 = P: BSPP 1/2" and T: BSPP 3/4"</p> | <p>E flow regulator valve
FC = PCFC-10.-..
see data sheet no.: CF-300-101-00</p> <p>F adjustment
C = cap
K = handknob</p> <p>G requested max. oil flow
specify in gpm
1 l/min = 0.265 Gpm (1 Gpm = 3.785 l/min)</p> |
|---|---|

Technical Data:

- nominal pressure:** 210 bar (A)
350 bar (S)
- weight:** 2.2 / 4.2 kg (A/S)
- included:** included
2 pcs. O-Ring 15.10 x 2.70