

base block, stack valve, CETOP 3 (with fixed flow regulator type PCFC)

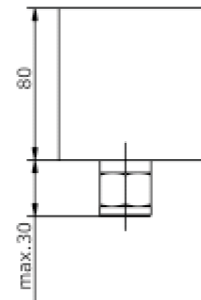
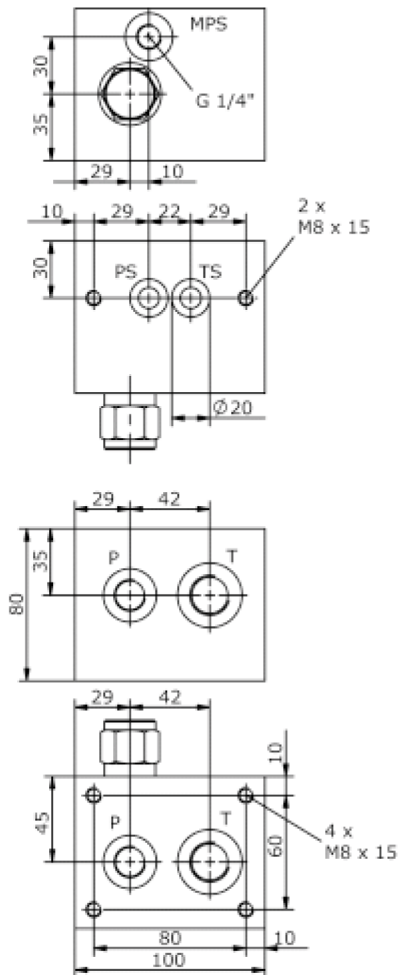
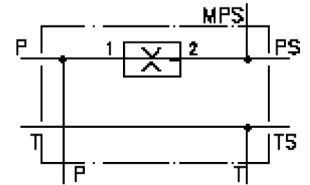
MBS-06.-B60/B..-FCF/.....



Motrac Hydraulik GmbH
Siemensring 87 - D-47877 Willich
fon +49-(0)2154-8162.0 - fax +49-(0)2154-8162.499
e-mail info.mhw@motrac-hydraulics.com
internet www.motrac-hydraulics.com

IM-420-102-00

(subject to change)



base block, stack valve, CETOP 3 (with fixed flow regulator type PCFC)

MBS-06.-B60/B.-FCF/.....



Motrac Hydraulik GmbH
Siemensring 87 - D-47877 Willich
fon +49-(0)2154-8162.0 - fax +49-(0)2154-8162.499
e-mail info.mhw@motrac-hydraulics.com
internet www.motrac-hydraulics.com

IM-420-102-00

(subject to change)

Ordering example:

MBS - 06A - B60 / B04 - FC - F / 05.00



Model code:

- | | |
|---|---|
| A design IMAV-stack system | E flow regulator valve FC = PCFC-10.-.. see data sheet no.: CF-300-101-00 |
| B size and material 06A = aluminum (F37) 06S = steel (9SMnPb28K resp. GGG-40) | F adjustment F = fixed |
| C base manifold base block | G requested max. oil flow specify in gpm 1 l/min = 0.265 Gpm (1 Gpm = 3.785 l/min) |
| D port size P and T B03 = P: BSPP 3/8" and T: BSPP 1/2" B04 = P: BSPP 1/2" and T: BSPP 3/4" | |

Technical Data:

- nominal pressure:** 210 bar (A)
350 bar (S)
- weight:** 2.2 / 4.2 kg (A/S)
- included:** included
2 pcs. O-Ring 15.10 x 2.70