

base block, stack valve, CETOP 3 (with pressure regulator valve PRR.)

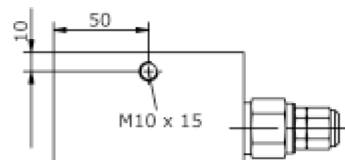
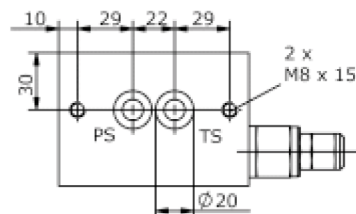
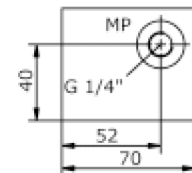
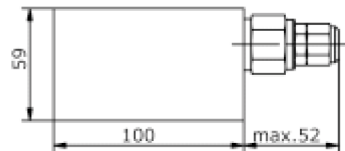
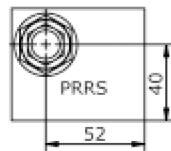
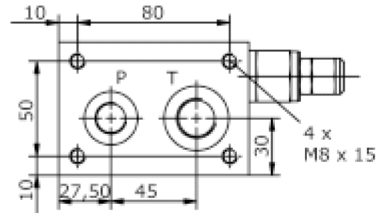
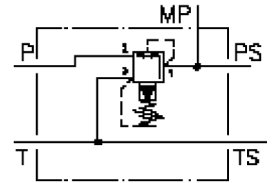
MBS-06.-B50/B..-RS./..



Motrac Hydraulik GmbH
Siemensring 87 - D-47877 Willich
fon +49-(0)2154-8162.0 - fax +49-(0)2154-8162.499
e-mail info.mhw@motrac-hydraulics.com
internet www.motrac-hydraulics.com

IM-418-102-00

(subject to change)



base block, stack valve, CETOP 3 (with pressure regulator valve PRR.)

MBS-06.-B50/B.-RS./..



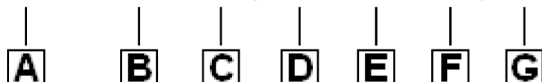
Motrac Hydraulik GmbH
Siemensring 87 - D-47877 Willich
fon +49-(0)2154-8162.0 - fax +49-(0)2154-8162.499
e-mail info.mhw@motrac-hydraulics.com
internet www.motrac-hydraulics.com

IM-418-102-00

(subject to change)

Ordering example:

MBS - 06A - B50 / B03 - RS - C / 15



Model code:

- | | |
|--|---|
| <p>A design
IMAV-stack system</p> <p>B size and material
06A = aluminum (F37)
06S = steel (9SMnPb28K resp. GGG-40)</p> <p>C base manifold
base block</p> <p>D port size P and T
B03 = P: BSPP 3/8" and T: BSPP 1/2"</p> <p>E pressure reducing valve
RS = PRRS-10.-.. (pilot operated) see data sheet no.: CP-210-101-00</p> | <p>F adjustment
C = cap
K = handknob</p> <p>G pressure range
PPRS-10.-..
15 = 3.4 - 105 bar
30 = 3.4 - 210 bar
50 = 3.4 - 350 bar</p> |
|--|---|

Technical Data:

- | | |
|--------------------------|--|
| nominal pressure: | 210 bar (A)
350 bar (S) |
| weight: | 1.3 / 2.8 kg (A/S) |
| included: | included
2 pcs. O-Ring 15.10 x 2.70 |